

KlimaHaus - CasaClima

PUTTING ENERGY EFFICIENCY AND SUSTAINABILITY
INTO PRACTICE



KlimaHaus - CasaClima

PUTTING SUSTAINABILITY INTO PRACTICE

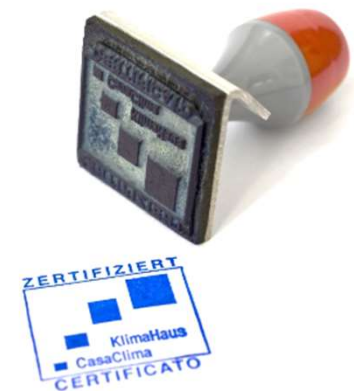
CERTIFICATION

EDUCATION

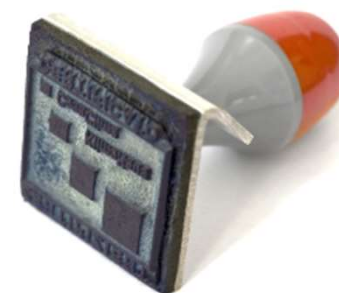
CONSULTANCY

RESEARCH & DEVELOPMENT

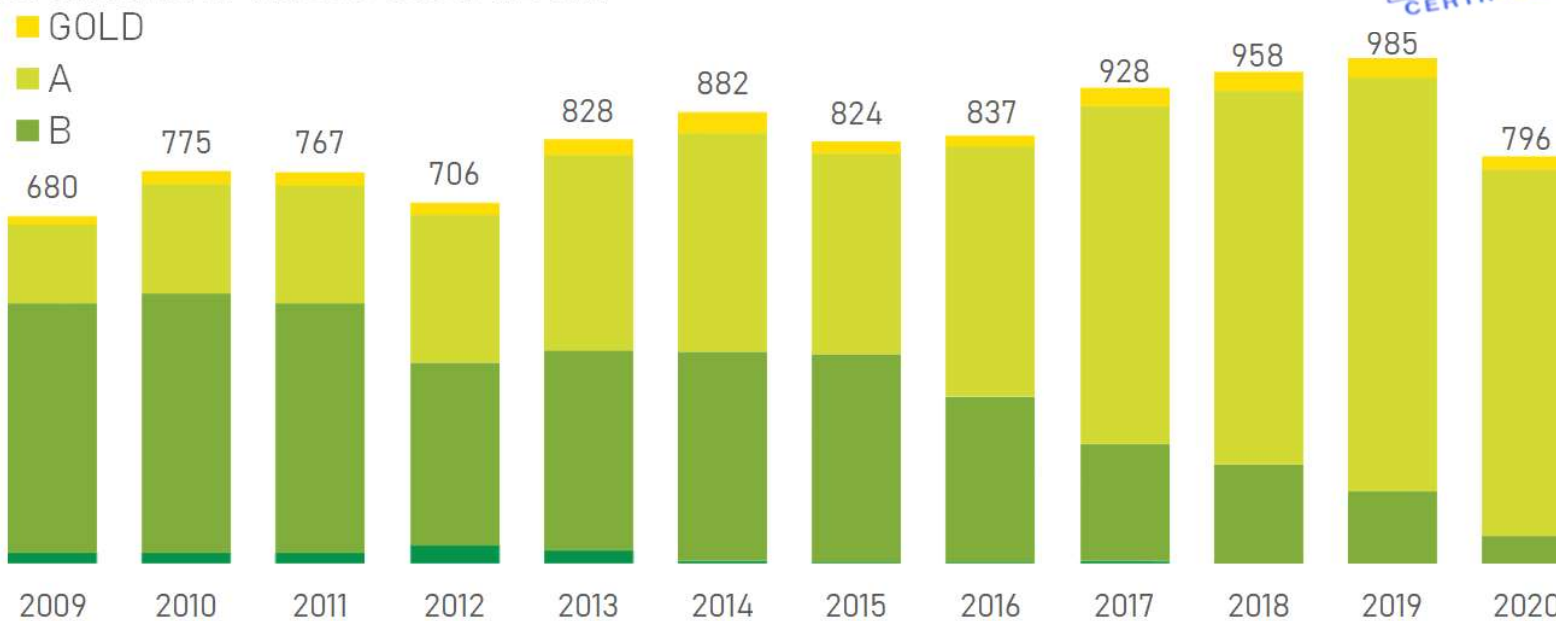
COMMUNICATION



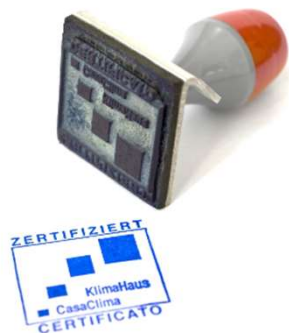
CERTIFICATION



Zertifizierung Neubauten
Certificazioni nuove costruzioni

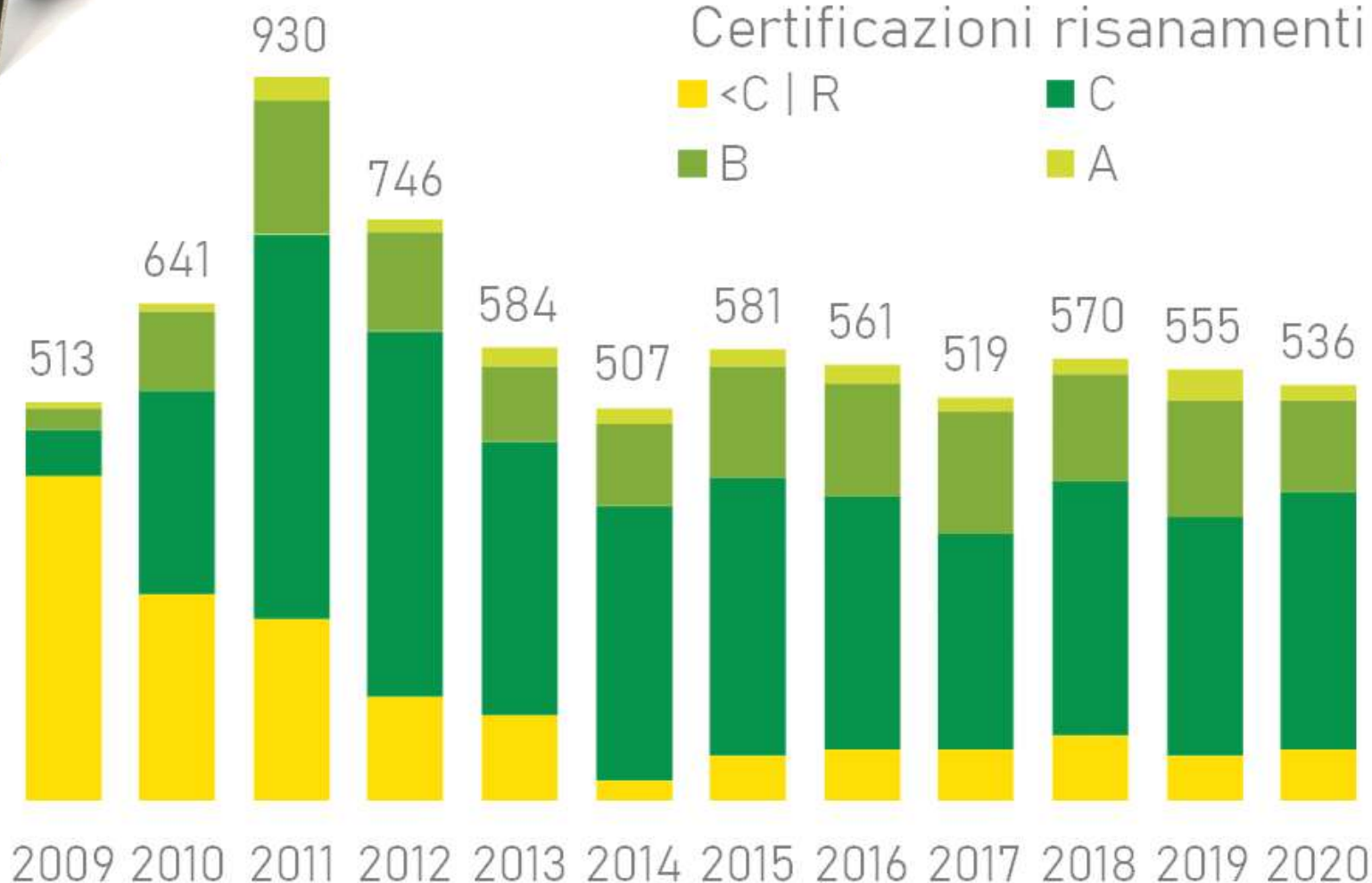


CERTIFICATION



Zertifizierung Sanierungen
Certificazioni risanamenti

<C | R C
B A



KlimaHaus - CasaClima

PUTTING SUSTAINABILITY INTO PRACTICE



CERTIFICATION

EDUCATION

CONSULTANCY

RESEARCH & DEVELOPMENT

COMMUNICATION



30.03.2021 - 02.04.2021

WEBINAR - BASE PER PROGETTISTI CASA CLIMA

Il "Corso Base CasaClima per progettisti" presenta il progetto CasaClima e i principi di una costruzione a basso consumo energetico. Vengono illustrati i principali fondamenti di fisica tecnica appl...



24.03.2021 - 31.03.2021

WEBINAR - Corso Installatore/Posatore caposquadra livello EQF4 conforme ai requisiti UNI 11673-3

Il corso specialistico di Installatore/Posatore Caposquadra EQF4 organizzato dall'Agenzia CasaClima risponde ai contenuti della norma UNI 11673-3 nel livello di qualifica più alto e corrisponde alle li...

More than
50 course types
(also english)

Consulenza CasaClima 2020



CERTIFICATION

EDUCATION

CONSULTANCY

RESEARCH & DEVELOPMENT

COMMUNICATION



ENERGY CHECK



<https://energycheck.klimahaus.it/de/willkommen-1.html>

EU-PROJECTS



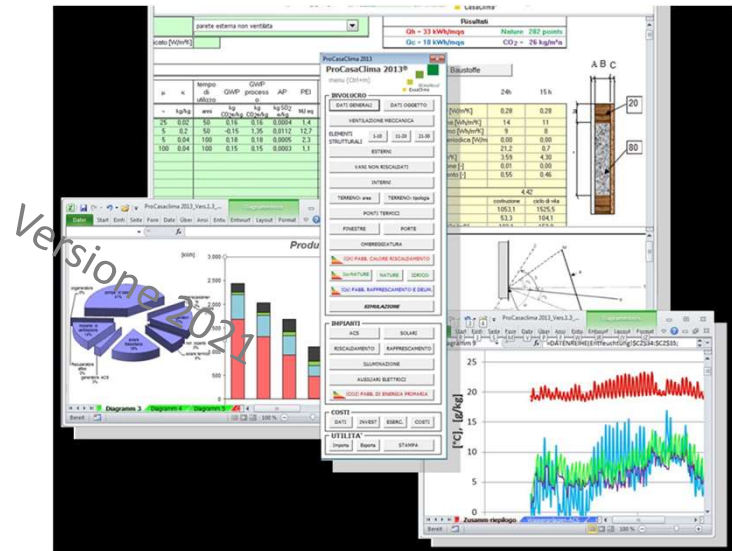
CERTIFICATION

EDUCATION

CONSULTANCY

RESEARCH & DEVELOPMENT

COMMUNICATION



COMMUNICATION



CERTIFICATION

EDUCATION

CONSULTANCY

RESEARCH & DEVELOPMENT

COMMUNICATION



Lockdown? Non per il cambiamento climatico!



COMMUNICATION



CERTIFICATION

EDUCATION

CONSULTANCY

RESEARCH & DEVELOPMENT

COMMUNICATION

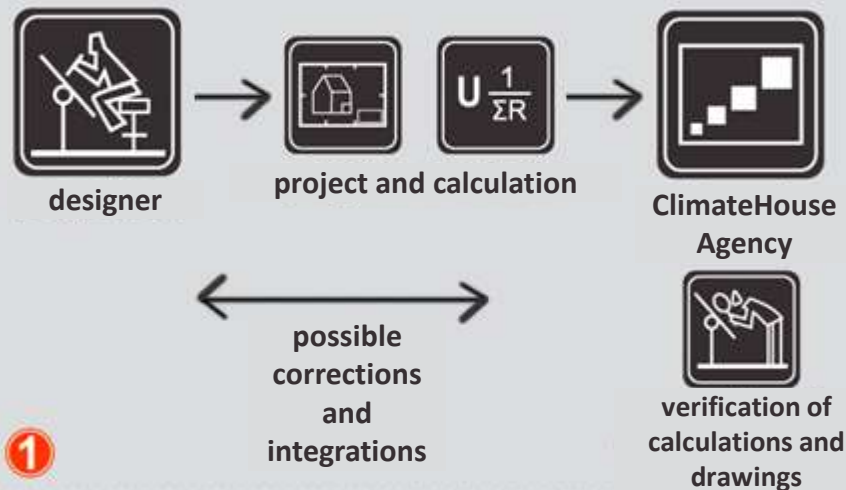


Lockdown? Non per il cambiamento climatico!

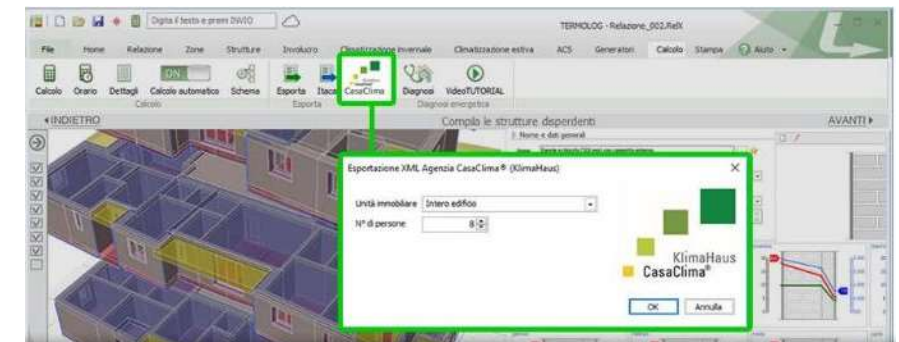
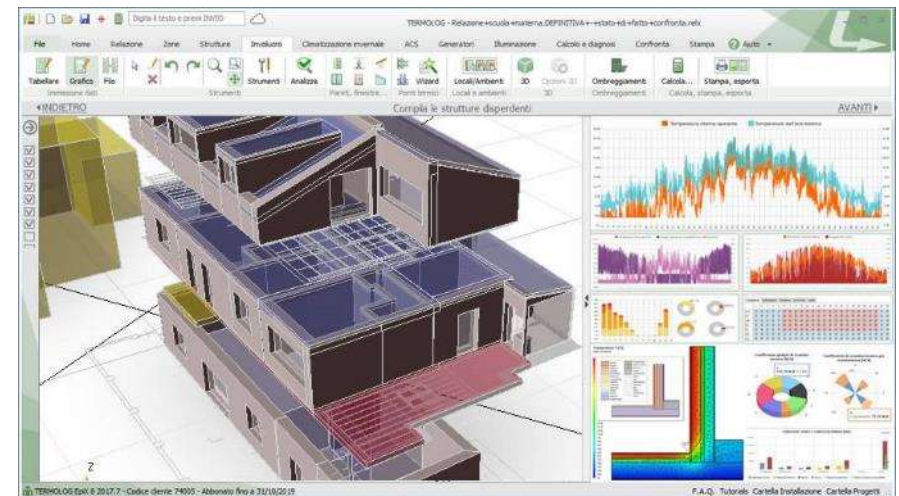
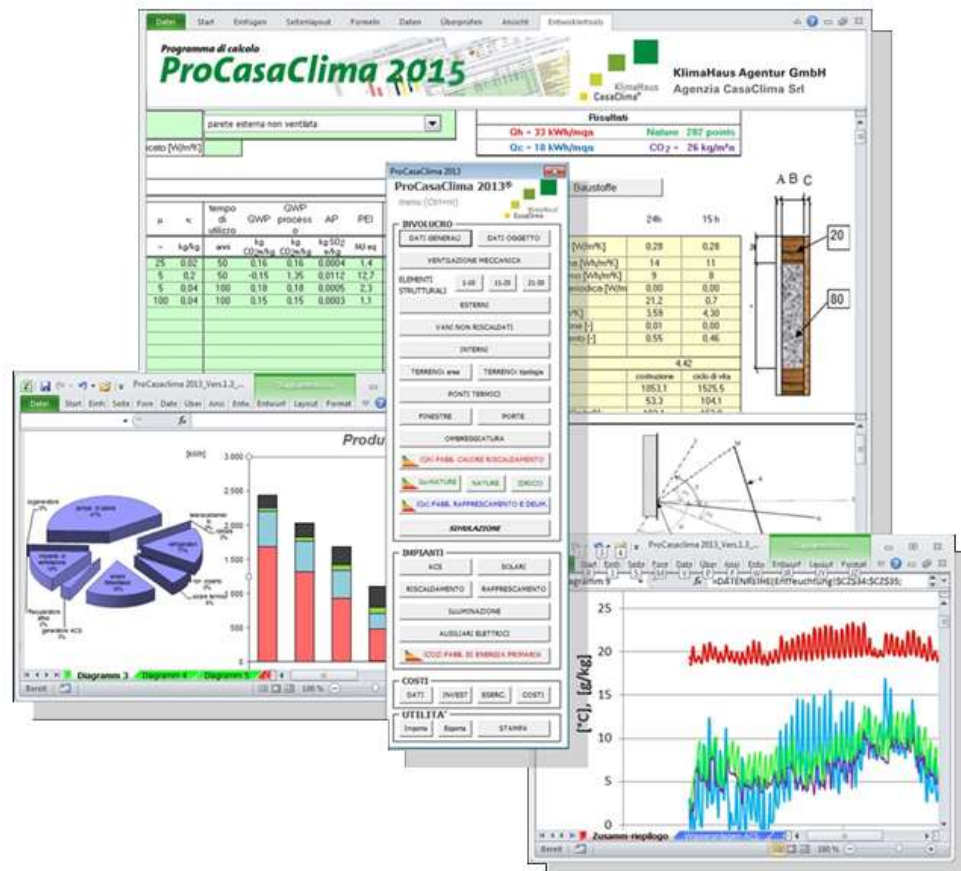
EVENTS:

- CO2-CUBUS
- CASACLIMA FAIR
- Other side –events with producers/customers/institutions

KlimaHaus – CasaClima Quality Assurance Process

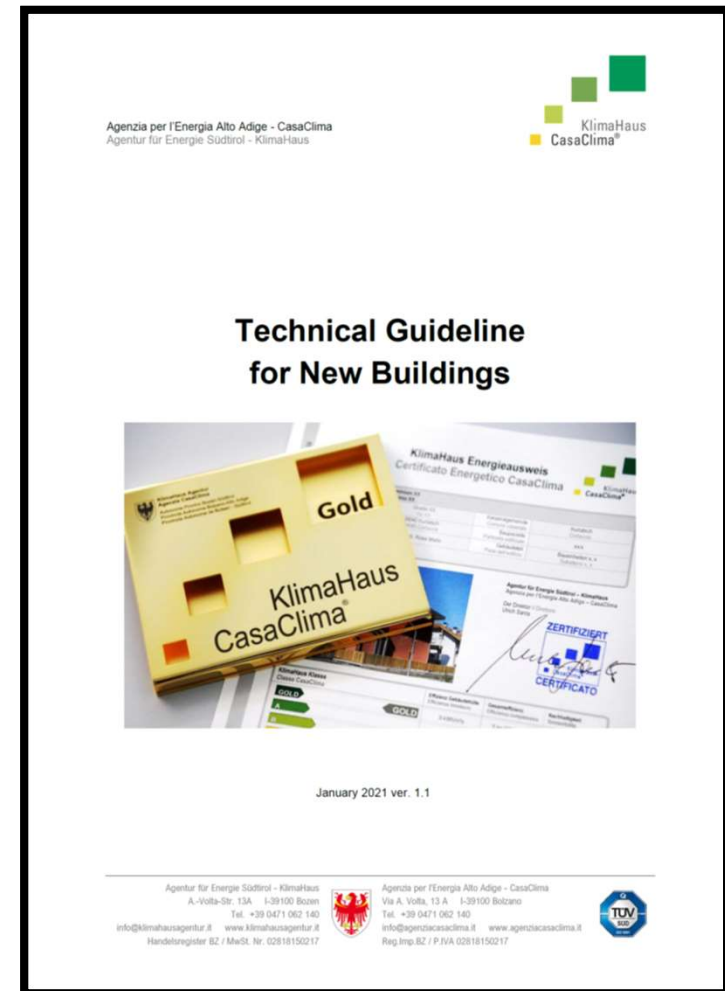


KlimaHaus – CasaClima Guidelines, Instruments and Tools



soon also an English version (for free)

KlimaHaus - CasaClima QUALITY ASSURANCE GUIDE LINES



soon also an international guideline....

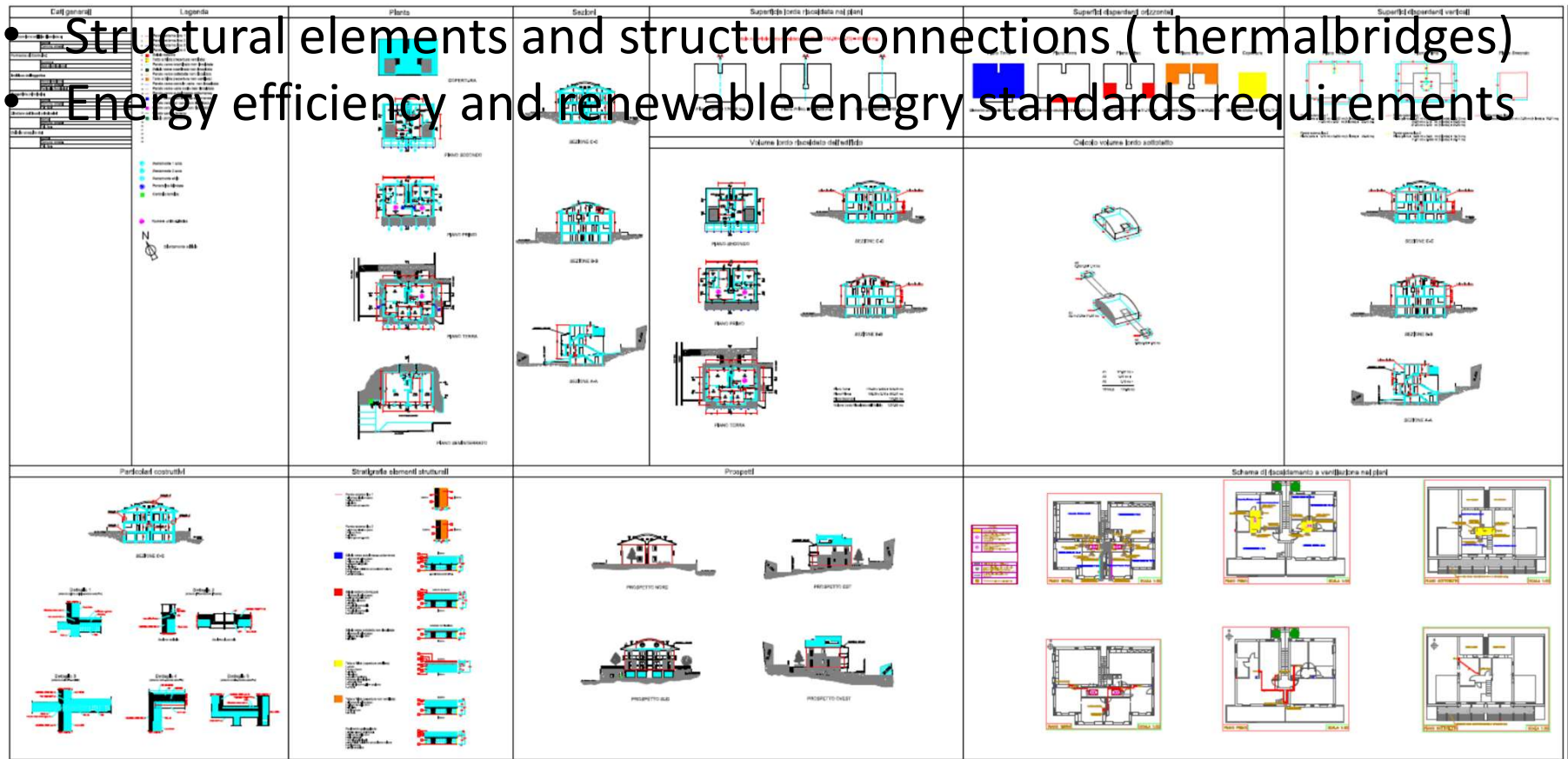
KlimaHaus - CasaClima

QUALITY ASSURANCE GUIDE LINES



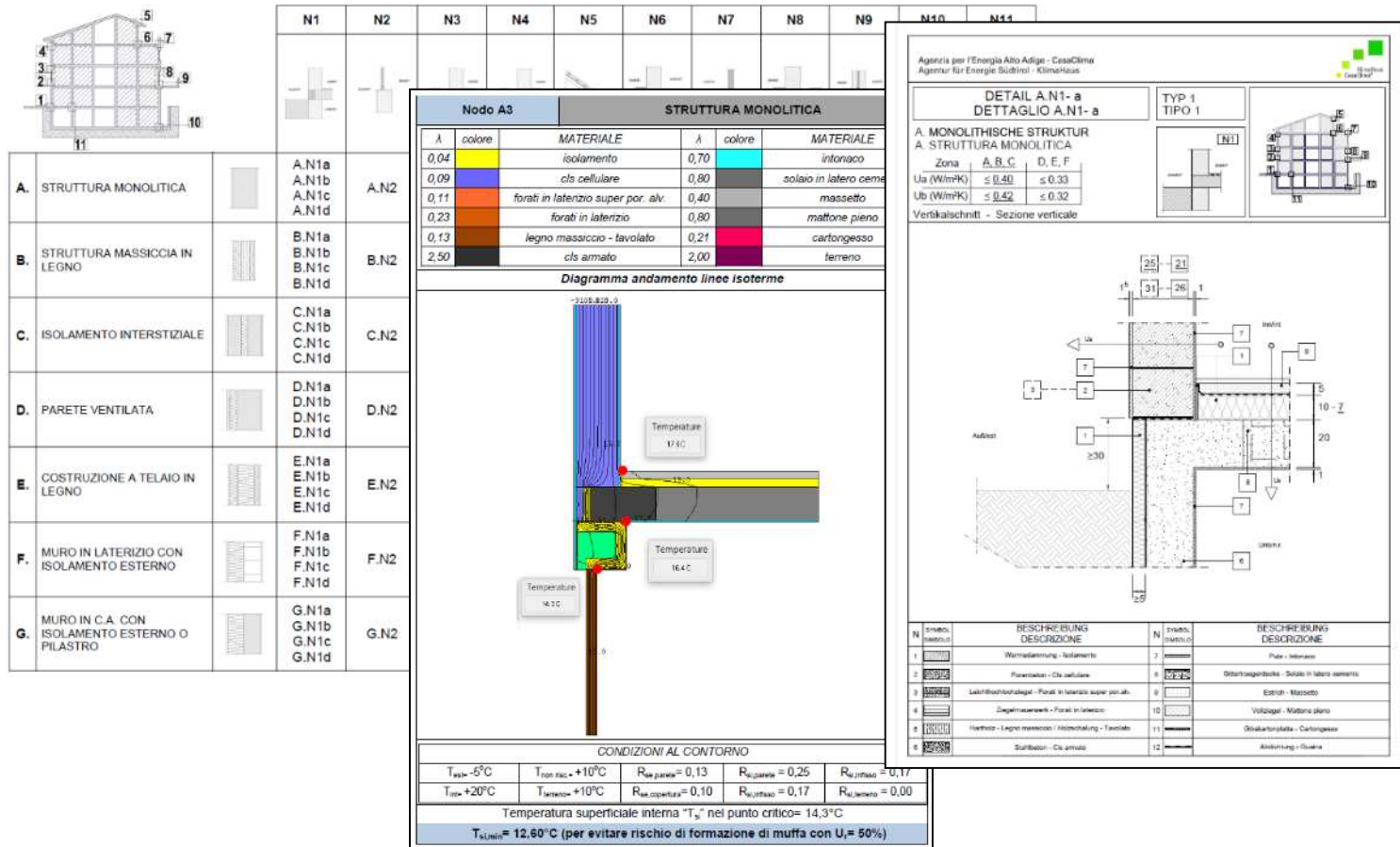
1. Project control

- Geometry
- Data input Energy balance Software (ProCasaClima)
- Structural elements and structure connections (thermalbridges)
- Energy efficiency and renewable energy standards requirements



KlimaHaus – CasaClima

Guidelines, Instruments and Tools



https://www.klimahaus.it/smarterit/documents/_mediacenter/catalogo_casaclima_2021.pdf

KlimaHaus - CasaClima

QUALITY AUDITS ON SITE



KlimaHaus - CasaClima

QUALITY ASSURANCE GUIDE LINES



2. Control construction

- Audits on the construction side
- Comparison of data for energy calculation
- Identification of products, connection details
- Conformity with the minimum energy requirements of the project

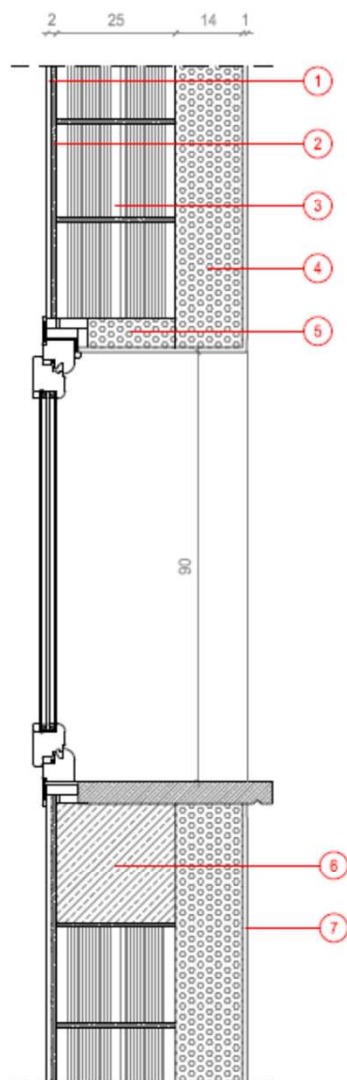


EXAMPLE

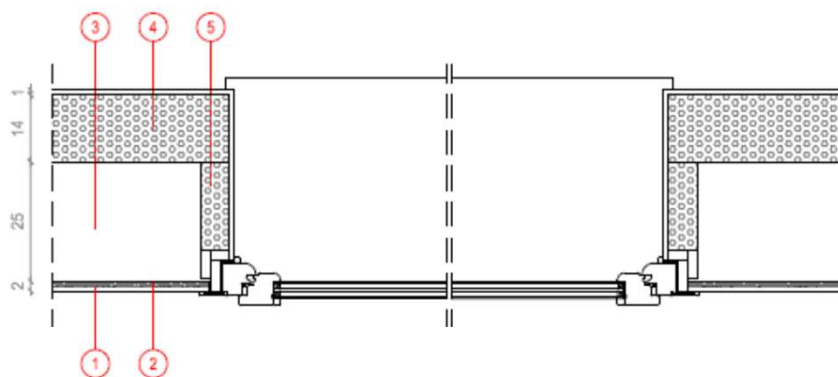
ABITAZIONE 9

PARTICOLARE COSTRUTTIVO FINESTRA (piano primo)

06

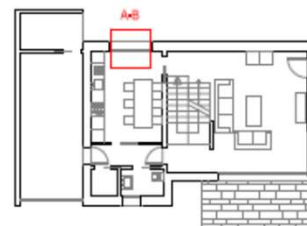


Sezione verticale / scala 1:10



Sezione orizzontale / scala 1:10

1. Lastre in cartongesso / 1,2 cm
2. Colla trasparente per cartongesso / 1 cm
3. Mattoncino forato
4. Cappotto in polistirene espanso in lastre GreyPor G KN8 400 / 14 cm
5. Polistirene espanso preformato GreyPor mod. GK 800 / 8 cm
6. Blocco prefabbricato da aerato YTONG Climaplus 325
7. Rasante per cappotto / 1 cm



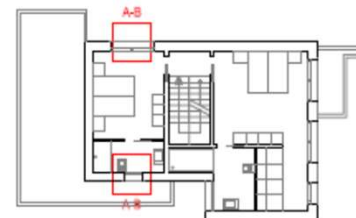
Riferimento pianta piano terra



Spessore del calcestruzzo aerato (Ytong-Climaplus) sotto avanzato della parete in muratura



Spessore del calcestruzzo aerato (Ytong-Climaplus) sotto avanzato della parete in muratura



Riferimento pianta piano primo

EXAMPLE

ABITAZIONE 9

DOCUMENTAZIONE FOTOGRAFICA

02/A



Isolamento dei faretti ad incasso sotto lo sbalzo del primo piano



Spessore del calcestruzzo alleggerito (Isocal) del solaio al piano primo



Rasatura armata del cappotto in EPS con graffite



Isolamento dei faretti ad incasso sotto lo sbalzo del primo piano



Spessore del calcestruzzo alleggerito (Isocal) del solaio al piano primo



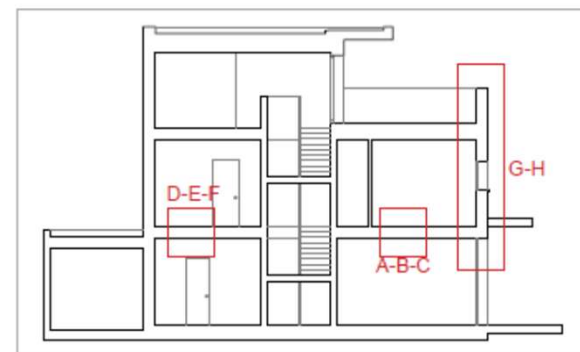
Cappotto in EPS con graffite della parete in c.a.



Isolamento dei faretti ad incasso sotto lo sbalzo del primo piano



Spessore del calcestruzzo alleggerito (Isocal) del solaio al piano primo



Sezione di riferimento

3. Final inspection

- Check of the entire documentation (including BDT)
- Final check of energy calculation data
- Possible technical non-conformities (technical commission)
- Compliance with the minimum energy requirements (assessment protocol)
- Issue of the KlimaHaus certificate and the KlimaHaus plaque



CLOSING THE GAP

Certified quality vs. toothless paper tiger



KlimaHaus - CasaClima

PUTTING ENERGY EFFICIENCY AND SUSTAINABILITY
INTO PRACTICE – CASACLIMA/KLIMAHaus NATURE



Energy Efficiency

Basso fabbisogno di calore

CasaClima

Oro

CasaClima

A

CasaClima

B

LCA Materials



Indoor Quality



Water cycle



Acoustic comfort



Natural daylight



CasaClima-KlimaHaus Nature



1. Energy efficiency	Energy efficiency of the building envelope	$\leq 50 \text{ kWh/m}^2\text{a}$
	Global energy efficiency of the building	$\leq 20 \text{ kg CO}_2/\text{m}^2\text{a}$
2. Environmental sustainability of the materials used	Primary non-renewable energy content (PEI) Acidification potential (AP) Global warming potential (GWP100) Durability of construction materials (tu)	Maximum score < 300 Points
3. Water management	Efficiency of the sanitary facilities of the building Unsealing of surfaces. Eventually existing structures for the utilisation and/or channeling of rain water	Degree of improvement compared to a standard type housing $\geq 35\%$
4. Interior air quality	Integrated ventilation system and/or employment of products and materials that respect the emissions ceiling (VOC and Formaldehyde).	Emissions ceiling for - Formaldehyde : 0,05 ppm - VOC lt. policy
5. Natural lighting	Daylight factor FLDm	$\geq 2\%$ $\geq 3\%$ for classrooms
6. Measures to protect from Radon exposure	Maximum level of Radon concentration Rn-222 in interior spaces	< 200 Bq/m ³ New building < 400 Bq/m ³ Refurbishment
7. Sound insulation	Airborne sound and footfall insulation	Set value in lt. guidelines

CasaClima-KlimaHaus SUSTAINABILITY LABELS



Sustainability certification **KlimaHaus Nature**



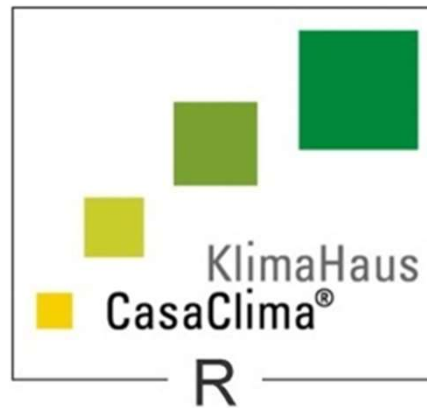
KlimaHaus – Energy certification







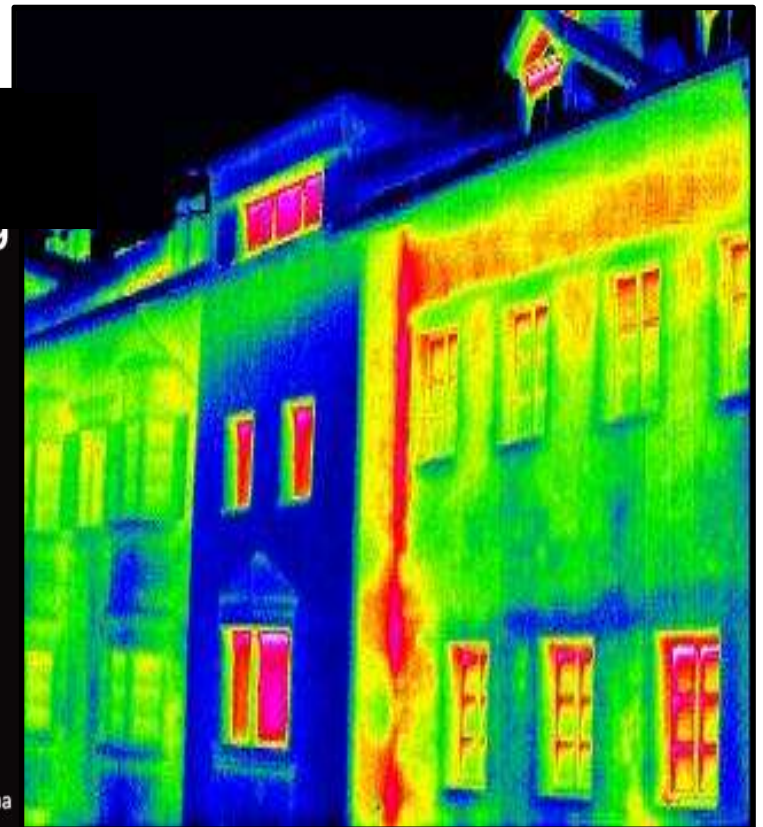
Energy refurbishment of buildings with Klimahaus / CasaClima R



Italian building stock distribution by year of construction



Fonte: Istat censimento 2001 / Rielaborazione interna



KlimaHaus - CasaClima

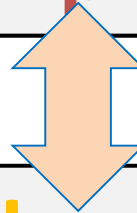
QUALITY ASSURANCE GUIDE LINES



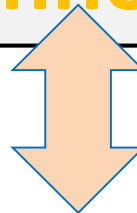
Building (single family, multi-family building)

Real estate unit

Potential for improvement

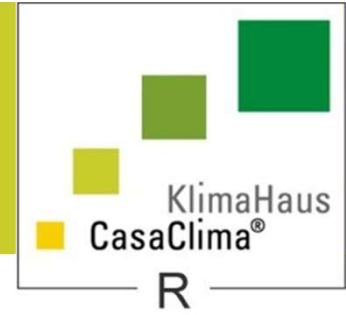


Urban and technological limits



Technical solutions - design - execution

Examples



Historic building

Multi fam. house

Real estate unit

External insulation



Historic building

Multi fam. house

Real estate unit



Roof insulation

Historic building

Multi fam. house

Real estate unit

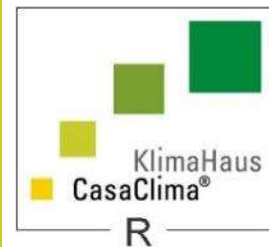


External insulation



KlimaHaus R

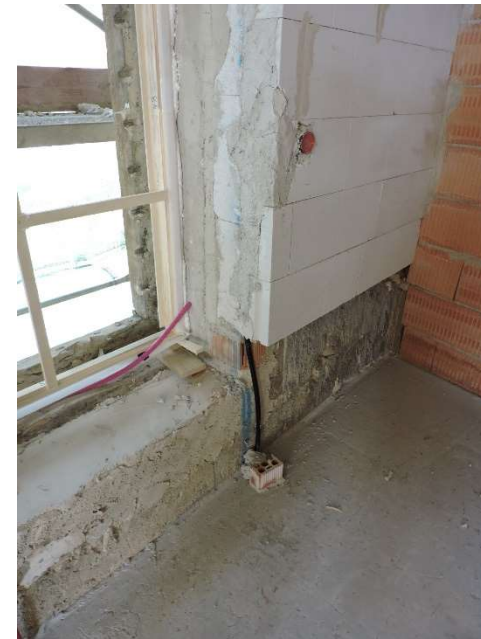
IMPROVING EFFICIENCY OF EXSTIG BUILDINGS



Historic building

Multi fam. house

Real estate unit



Refurbishment of historic buildings - interior insulation

Historic building

Multi fam. house

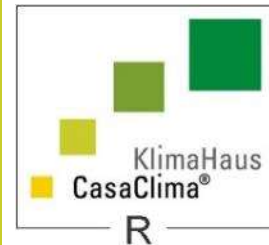
Real estate unit



Refurbishment of historic buildings - interior insulation

KlimaHaus R

IMPROVING EFFICIENCY OF EXSTIG BUILDINGS



More than 11.000 certified new and
over 7.000 retrofitted buildings



Vision without execution is just hallucination

Thomas Alva Edison



Schwarzensteinhütte, rifugio Vittorio Veneto al Sasso Nero, Stifter & Bachmann

Schwarzensteinhütte - Rifugio Sasso Nero, KlimaHaus A, 3.026 m