



PILOT ACTION PA8-POLAND/CZECH REPUBLIC

Interreg 
CENTRAL EUROPE European Union
European Regional
Development Fund

BOOSTEE-CE


NOVUM Evropské seskupení pro územní spolupráci
Europejskie Ugrupowanie Współpracy Terytorialnej

POLAND/CZECH REPUBLIC

PA8. Testing the project platform in PL/CZ cross-border regions



Introduction

The BOOSTEE-CE (*Boosting Energy Efficiency in Central European Cities through Smart Energy Management*) project will develop and implement technical solutions, strategies, management approaches & financing schemes to achieve higher Energy Efficiency (EE) in public buildings. This will be achieved through a transnational cooperation and using geospatial data, smart energy management tools and energy audit to facilitate the implementation of EE buildings. The final aim is to improve the governance of EE in existing public buildings (within Pilot Actions) and ultimately reduce energy consumption.



Town hall - Municipality of Lubawka
(source: https://pl.wikipedia.org/wiki/Plik:Lubawka,_pl._Wolno%C5%9Bci_Ratusz_DSC_0031-1.JPG)

Aims

The pilot action focuses on the use and tests the OnePlace platform - the tool which is developed under the project framework. The platform is tested in PL/CZ cross-border cities, particularly in Lubawka/PL and Žacléř/CZ and is demonstrated among stakeholders from the region, including regional authorities.

The following objectives have been agreed as part of the pilot:

- demonstration and evaluation of the OnePlace Platform for planning; future EE investments;
- easier operation of the building;
- promoting and disseminating knowledge about energy efficiency measures in buildings.



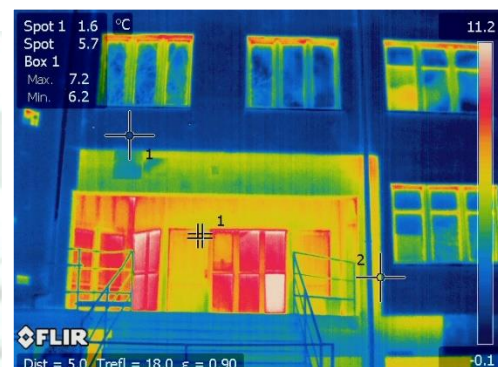
Public school - Municipality Of Lubawka
(source: <http://fotopolska.eu/foto/927/927275.jpg>)



Public health care institution - Municipality of Lubawka
(source: Google Maps)



Primary school - Město Žacléř
(source: Google Maps)



Public health care institution - Municipality of Lubawka -
Estimation of heating losses from thermal data

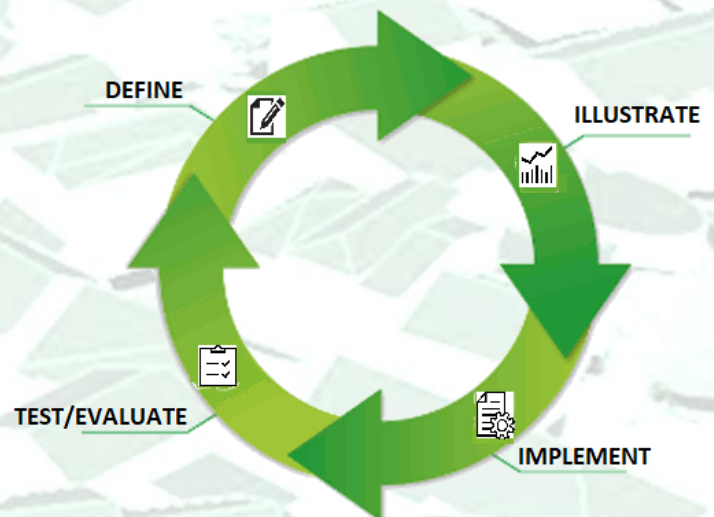
Solutions

The pilot action includes an implementation of the **OnePlace** platform. The pilot action is being implemented through utilization the communication toos and activities in the scope of the project. The OnePlace was presented in Lubawka and as well in Žaclěř under the Focus Groups Meetings and Seminars.



PA idea (DEFINE -> ILLUSTRATE -> IMPLEMENT -> TEST/EVALUATE)

First you **define** of the set of usable data. The collected data is used to monitor energy flows using the developed tool which **illustrates** the tool's potential and **implements** its operation on pilot buildings. **Testing and evaluation** of the tool involves monitoring energy to provide knowledge about energy flows in the building.



PA indicators & results

- activities period **24 months**
- **3 people** involved in PA implementation
- **2 tools** / instruments used
- **5 trainings, meetings, seminars**
- improving awareness of the energy efficiency potential

Added values for replication and dissemination

The activities can be transferable and replicated in other cases and regions. Information about the pilot action is promoted and disseminated in the region and beyond.

The results of Pilot Action 8 gave the opportunity to **improve, share and extend local and regional experiences** in case of energy efficiency actions and use of the 3D webGIS solutions to better manage and analyse energy data. **The developed OnePlace platform**, which is the main core of the presented pilot action, **can be easily replicated by other stakeholders and as well transfer to other territories.**

Contact

Anna Nowacka

Project manager

anna.nowacka@euwt-novum.eu

Bartosz Bartniczak

Director

bartosz.bartniczak@euwt-novum.eu

European Grouping of Territorial
Cooperation NOVUM Limited

DISCOVER MORE ABOUT BOOSTEE-CE

Contact us!

🌐 Project website: www.interreg-central.eu/Content.Node/BOOSTEE-CE.html

📘 Project on Facebook: www.facebook.com/BOOSTEECE

One💡Place Platform OnePlace website: <https://oneplace.fbk.eu>