

TAKING
COOPERATION
FORWARD



IAH Post Congres Tour
Ljubljana / 2nd October 2017



Presentation of the PROLINE-CE project



PROLINE-CE / PP4 University of Ljubljana / doc. dr. Barbara Čenčur Curk

PROJECT TITLE

Efficient Practices of Land Use Management Integrating Water Resources Protection and Non-structural Flood Mitigation Experiences

Program: Interreg Central Europe 2014-2020

Project duration: 1.7.2016 - 30.6.2019 (3 years)

Lead partner: Austrian Federal Ministry of Agriculture, Forestry, Environment and Water



PROLINE-CE: PARTNERSHIP

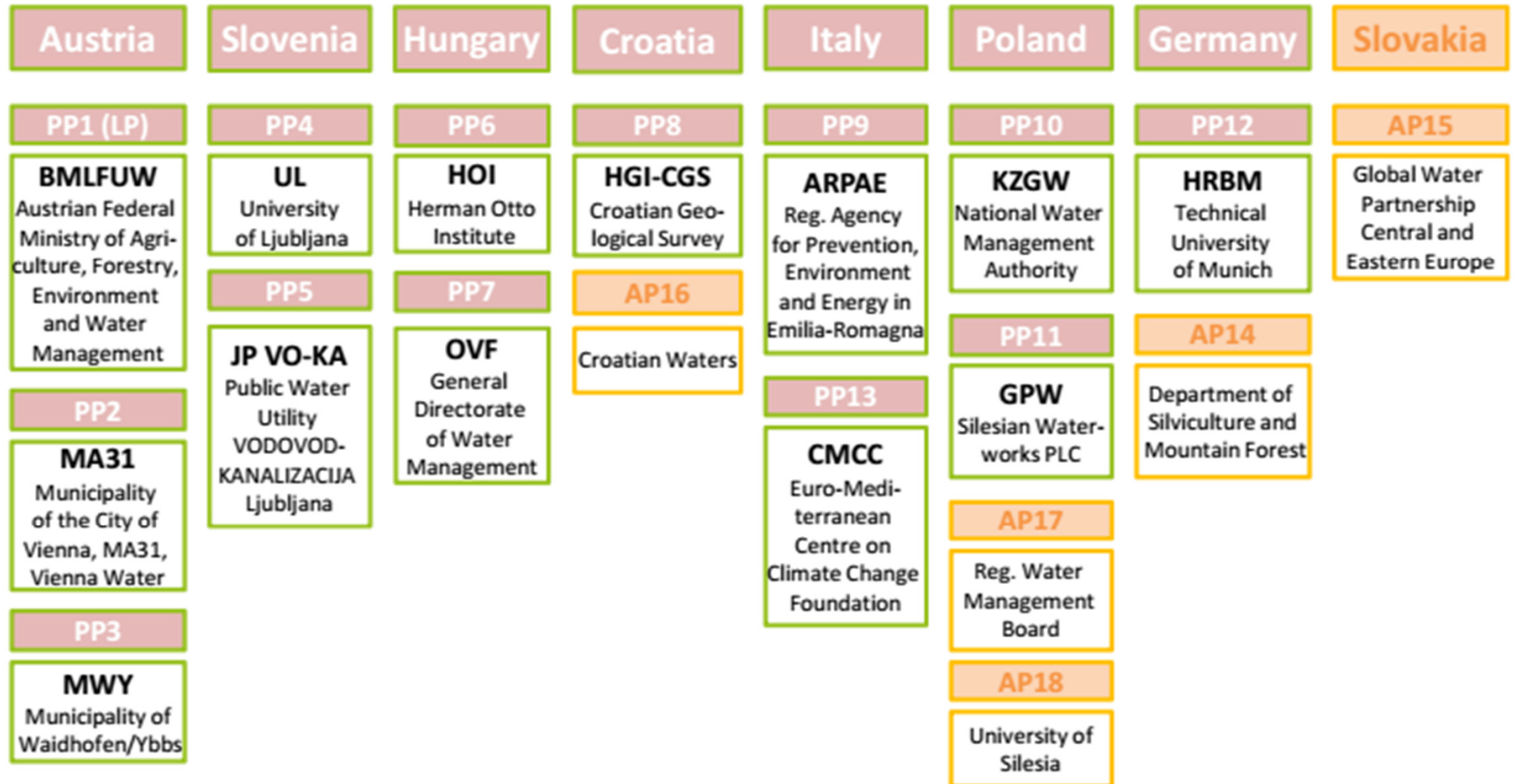
13 project partners and 5 associated partners from 8 countries:

AT, DE, HR, HU, IT, PL, SI, SK

- governmental institutions
- water utilities
- research / educational institutions



PROLINE-CE: PARTNERSHIP



PROLINE-CE: OBJECTIVES



T1 - Capitalisation: Capacity building and stakeholder engagement

- Review of the state-of-the-art of sustainable land use and best management practices for drinking water protection (DPSIR analysis)
- Identification of gaps
- Proposal of measures

T2 - Pilots: Implementation and monitoring

- Land use management and implementation of best management practices in pilot areas
- Proposal of measures and actions for achieving sustainable drinking water management

STAKEHOLDER
PARTICIPATION



T3 - Synopsis: Vision and guidance

→ GOWARE-CE - Transnational Guide towards an Optimal Water Regime (implementation of management of land use, flood, drought and drinking water sources)

T4 - Advancement: Strategic planning and commitment

→ DriFLU (Drinking Water/Flood/Drought) Charter is a joint declaration act, signed by no less than 10 partners, in order to bundle efforts towards a common goal: flood/drought management and push the activities conducted in PROLINE-CE

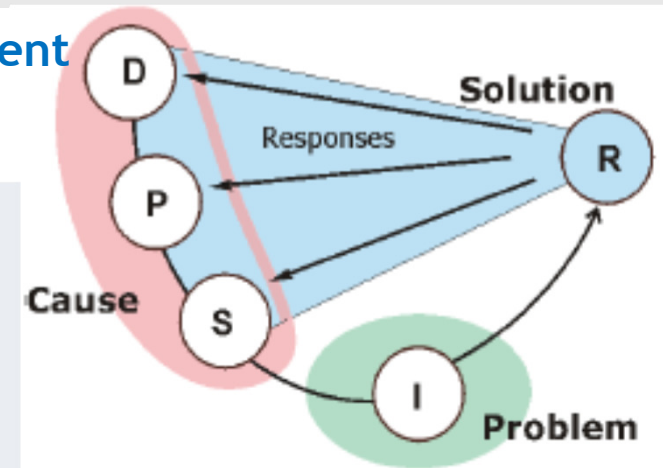
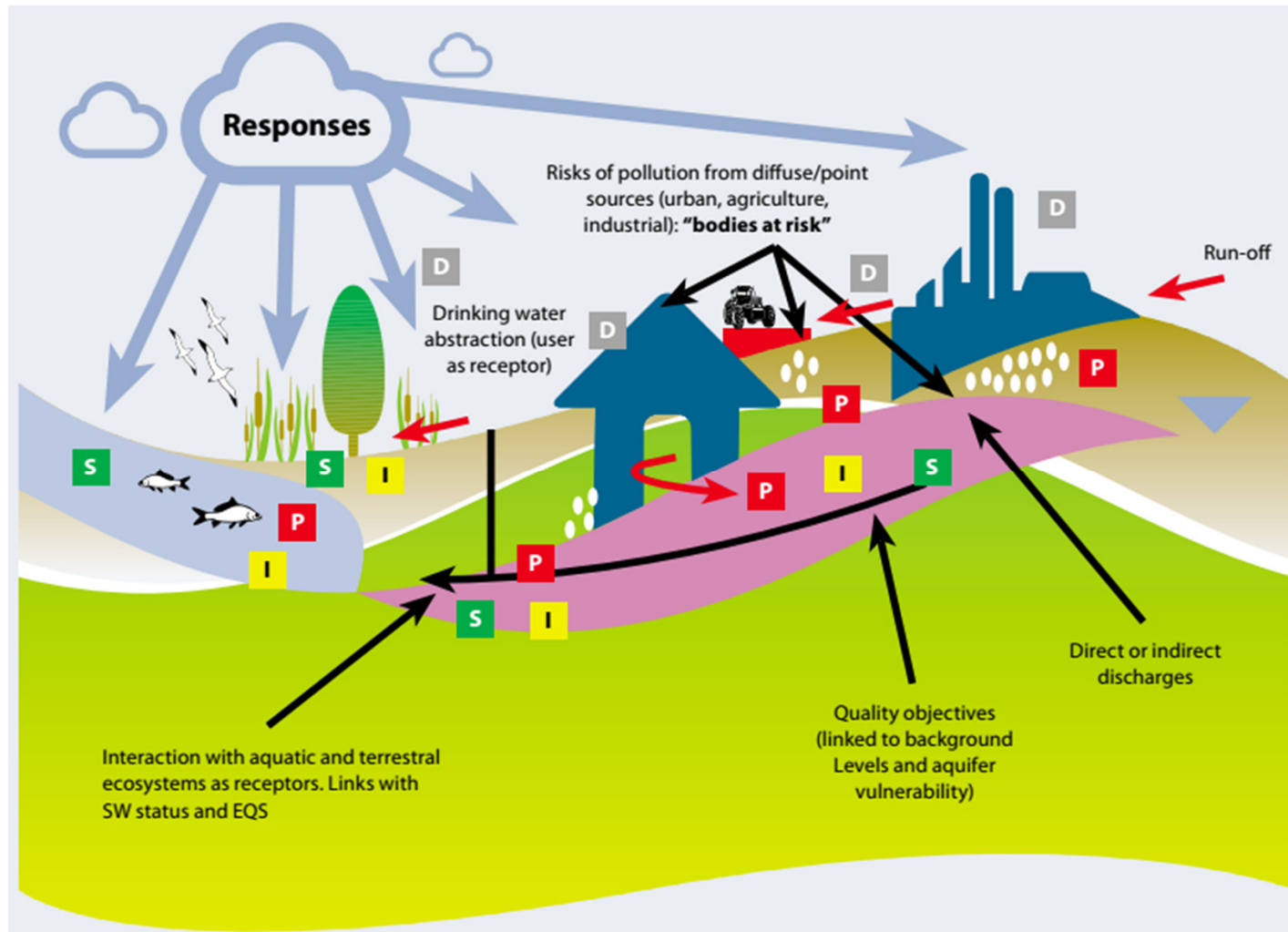
**STAKEHOLDER
PARTICIPATION**



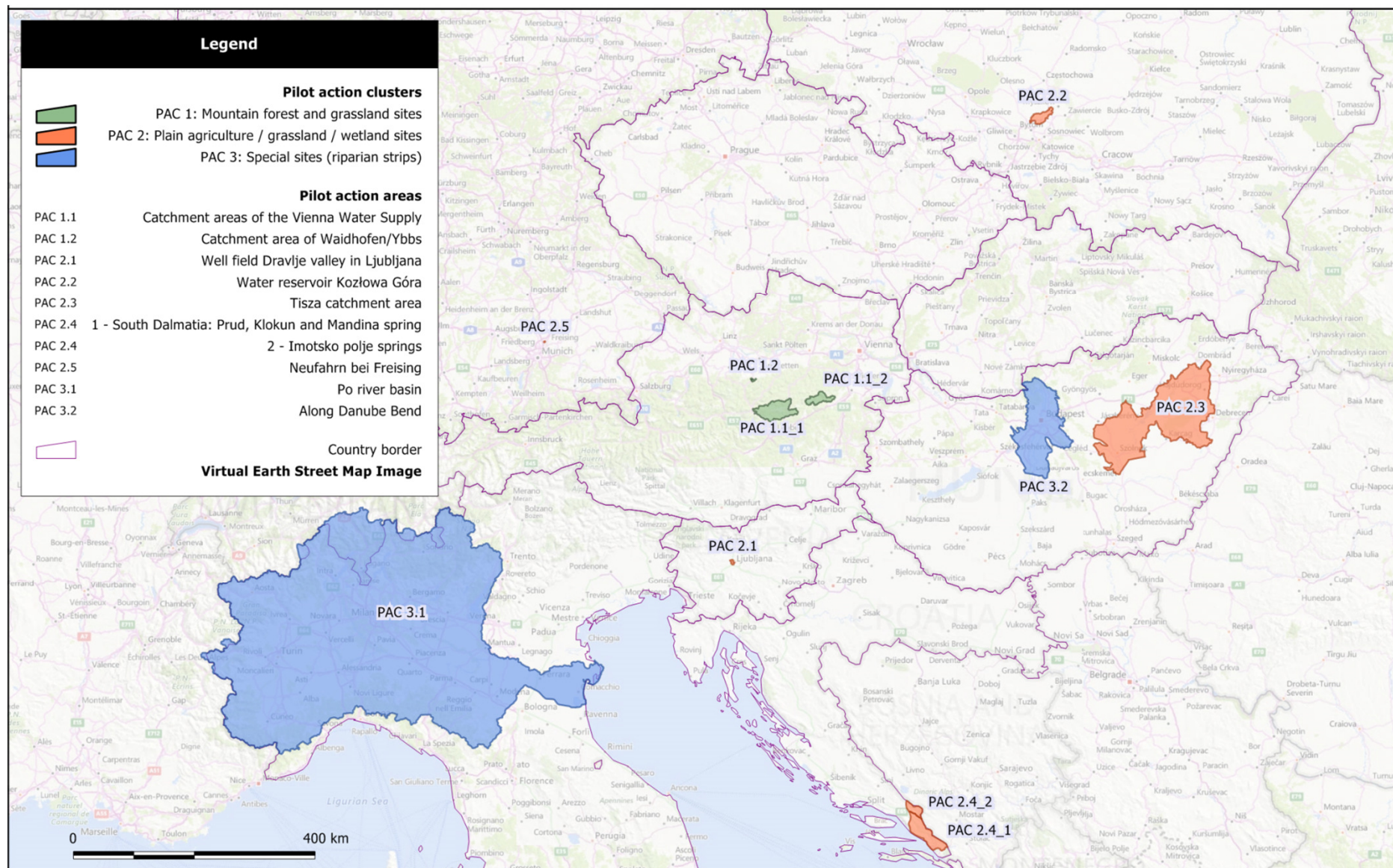
PROLINE-CE: T1 DPSIR

T1 - Capitalisation: Capacity building and stakeholder engagement

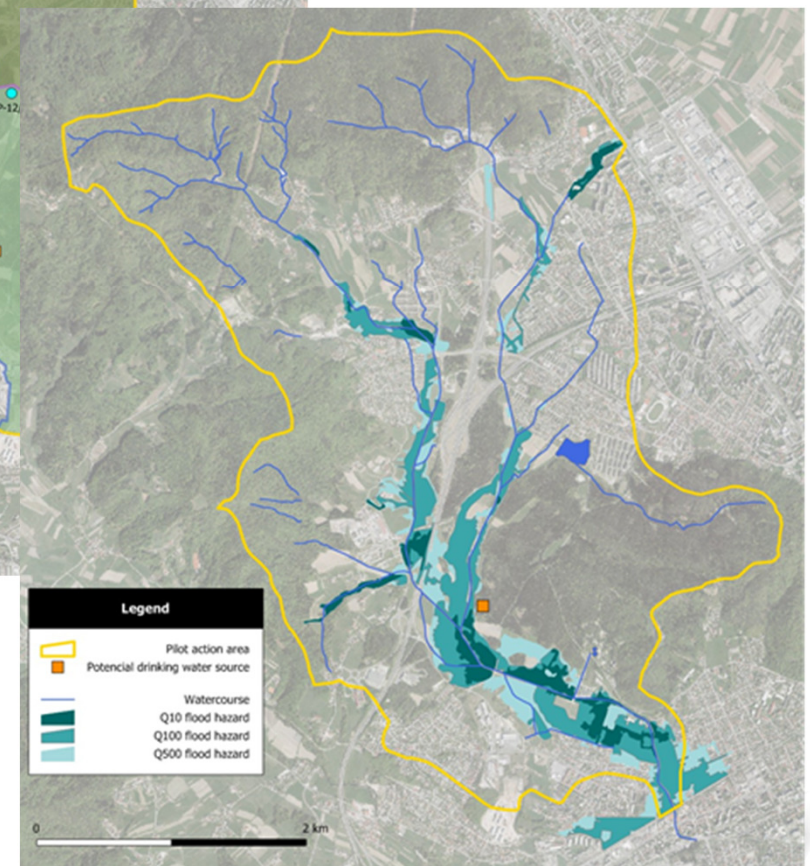
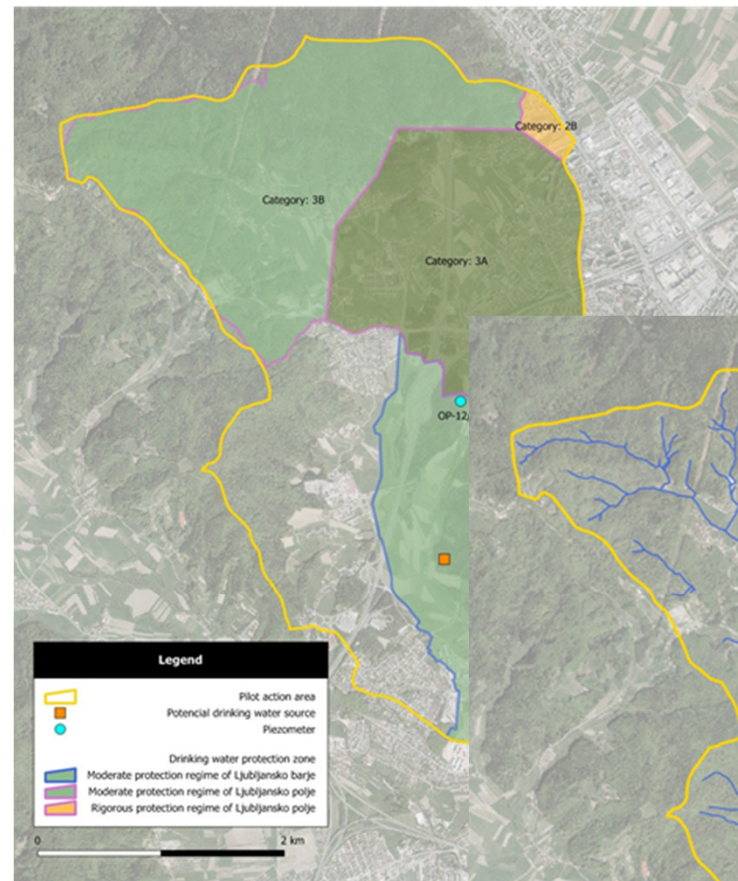
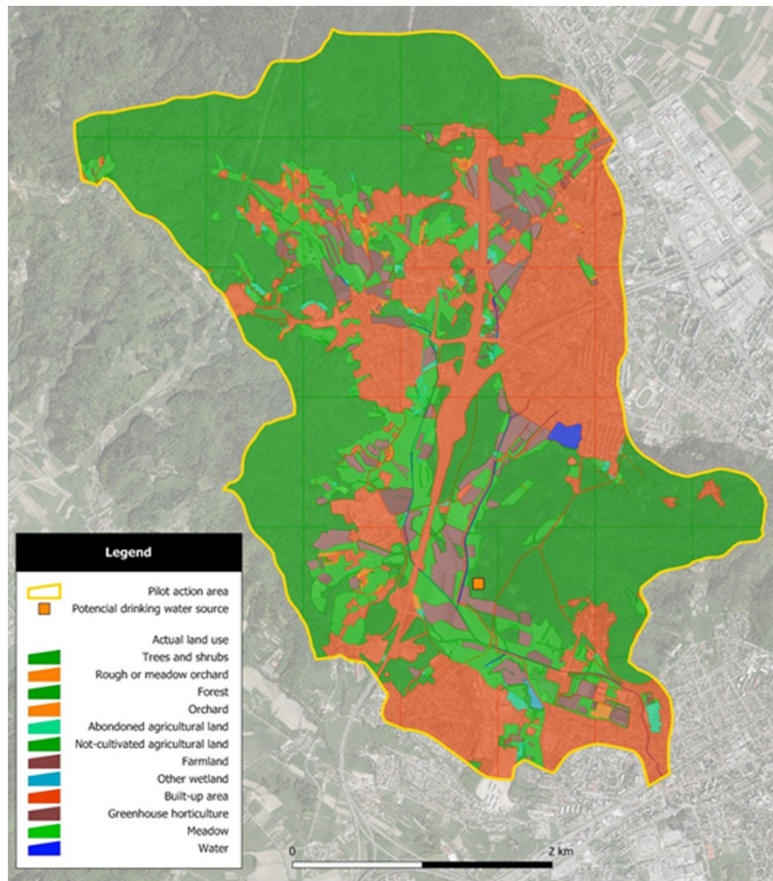
→ Land use impact on drinking water supply (DPSIR analysis)



PROLINE-CE: T2 PILOT ACTIONS



PROLINE-CE: DRAVLJE VALLEY



DRAVLJE VALLEY PILOT ACTION ISSUES

- planned new (reserve) well field for Ljubljana drinking water supply
- land use pressures and conflicts: settlement, highway, large open spaces adjacent to a Natural Park of hilly area
- flood area with not properly regulated surface waters coming from hinterland: much of these waters are conducted to the urban sewage system, which in high waters cannot receive so much water;
- more frequent flood discharges in the future due to climate change
- harmonized land use and water resources management is a prerequisite for quality of life and drinking water in this area



