



ORIENT / EAST-MED CORRIDOR

PARTNERSHIP



CORCAP

CAPITALISING TEN-T CORRIDORS FOR REGIONAL DEVELOPMENT AND LOGISTICS

Project partners

- SMR Saxon State Ministry for Regional Development (Lead Partner)
- SBO Saxon Inland Ports Upper Elbe
- Rostock Port
- Usti Region
- KORDIS JMK
- IPP Institute of Spatial Planning
- KTI Institute for Transport Sciences Non-profit Ltd.
- FBL Freeport of Budapest Logistics
- GySEV Győr-Sopron-Ebenfurth Railway
- New railway line Dresden-Prague EGTC

Associated partners

- MMR Ministry of Regional Development of the Czech Republic
- MDČR Ministry of Transport of the Czech Republic
- DGG Association of German Freight Villages
- ŽESNAD Association of Rail Freight Carriers of the Czech Republic
- Saxon Switzerland-Eastern Ore Mountains District
- Bratislava Self-Governing Region
- Nitra Self-Governing Region
- ÚÚR Institute of Spatial Development
- ARL Academy for Territorial Development in the Leibniz Association
- Metropolitan Region Central Germany

Edited by

KORDIS JMK, a.s.
Nové sady 30 | 602 00 Brno

This measure is co-financed from tax resources on the basis of the budget approved by the members of the Saxon State Parliament.

The CORCAP project is part-financed by the European Regional Development Fund (ERDF) within the framework of the CENTRAL EUROPE programme.

PICTURE CREDITS (title page), top row (from left to right): Pixabay, Rostock Port (2x), middle row: GySEV, KORDIS JMK, SBO, bottom row: GySEV, SBO, Pixabay



(c) New railway line Dresden-Prague EGTC



CORRIDOR CHARACTERISTICS

- 9 member states
- 5 800 km of rail
- 5 400 km of road
- 1 700 km of inland waterways



- 15 urban nodes
- 15 core airports
- 25 rail-road terminals
- 12 maritime ports
- 10 inland ports



www.interreg-central.eu/corcap



www.facebook.com/corcapproject





ABOUT THE PROJECT

The TEN-T corridor Orient/East-Med connects Central and South-East Europe. A crucial bottleneck of emerging relevance is the Dresden-Prague section, which needs to be extended by a new railway line to improve the connectivity between German seaports and destinations in particular in the Czech Republic, Slovakia, Austria and Hungary.

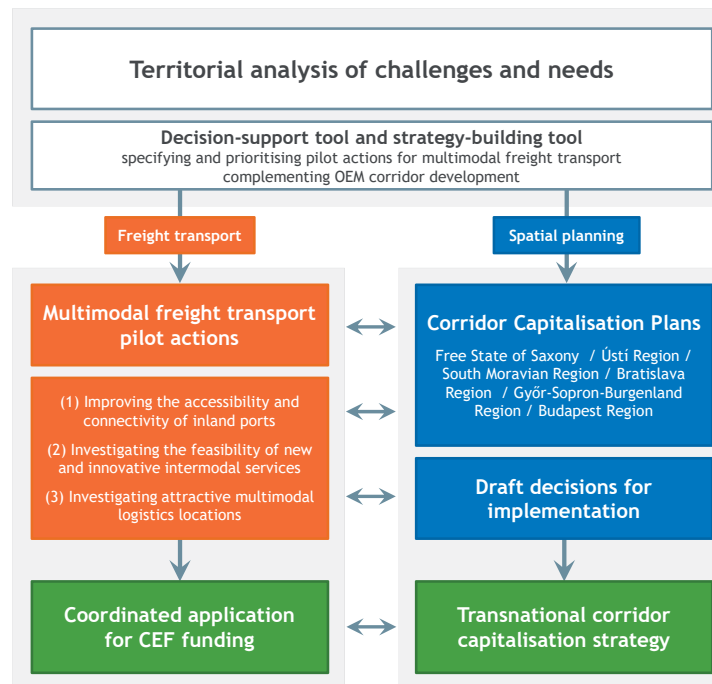
To capitalise the opportunities of the infrastructure investment for multi-modal environmentally friendly freight, the Free State of Saxony teamed up with partners from Germany, the Czech Republic, Slovakia and Hungary. Realising activities aimed at better coordination among stakeholders in the field of transport and spatial planning, the partners will contribute to the creation of an environment for more efficient rail freight in Central Europe.

To achieve the objectives of the project the partners will develop “Corridor Capitalisation Plans” to facilitate the interaction of regional development and transport infrastructure development. These plans, which will have a planning horizon corresponding to the perspective of realisation of the new railway line Dresden-Prague, will demonstrate how an intensively used corridor affects regional development and logistics, and which contributions made on regional level will strengthen the corridor and its functionality.

As informal instrument, “Corridor Capitalisation Plans” address existing planning levels and instruments in the field of transport and logistics, regional development and spatial planning on local, regional, national and transnational (partly macro-regional) level, thus contributing to multi-level governance.



OUTPUTS



PILOT ACTIVITIES

To demonstrate the short-term benefits of better accessibility and connectivity and to underline the added value of the strategic infrastructure invest-

ment, practical steps towards more sustainable freight transport will be taken through pilot activities. These are aimed at the following issues:

IMPROVING THE ACCESSIBILITY AND CONNECTIVITY OF INLAND PORTS

- Smart traffic management system for the Budapest Freeport (FBL Freeport of Budapest Logistics)
- Accessibility harmonisation of inland ports in the German-Czech section of the OEM corridor (SBO Saxon Inland Ports Upper Elbe)

INVESTIGATING THE FEASIBILITY OF NEW AND INNOVATIVE INTERMODAL SERVICES

- Development and testing of logistics concepts for new intermodal services, including an OEM freight liner train (Rostock Port, SBO Saxon Inland Ports Upper Elbe)
- Development and testing of system approach for low-cost improvements for rail freight transport (GySEV Győr-Sopron-Ebenfurth Railway)

INVESTIGATING ATTRACTIVE MULTIMODAL LOGISTICS LOCATIONS

- Identification of attractive multimodal logistics locations and elaboration of profiles for development in the South Moravian Region and in the Bratislava Region (KORDIS JMK, IPP Spatial Planning Institute)



10
PARTNERS

5
COUNTRIES

6
PILOT
ACTIONS

1
TRANSNATIONAL
STRATEGY

6
CORRIDOR
CAPITALISATION
PLANS



36
MONTHS

2.5
MLN EUR

