



Veneto
ADAPT

Adaptation and mitigation planning at urban level in central Veneto cities.

LIFE VenetoADAPT project experience

Daniela Luise – Municipality of Padova

Emanuele Cosenza - SOGESCA

Coordinatore Partner



Con il contributo dello strumento finanziario LIFE della Commissione Europea
With the contribution of the LIFE financial instrument of the European Community

KEY PILLARS



Adaptation
planning



Mitigation
planning



From
SEAP to
SECAPs



LIFE16 CCA/IT/000090



Veneto
ADAPT

THE PROJECT



VenetoADAPT 60% co-financed by LIFE Programme








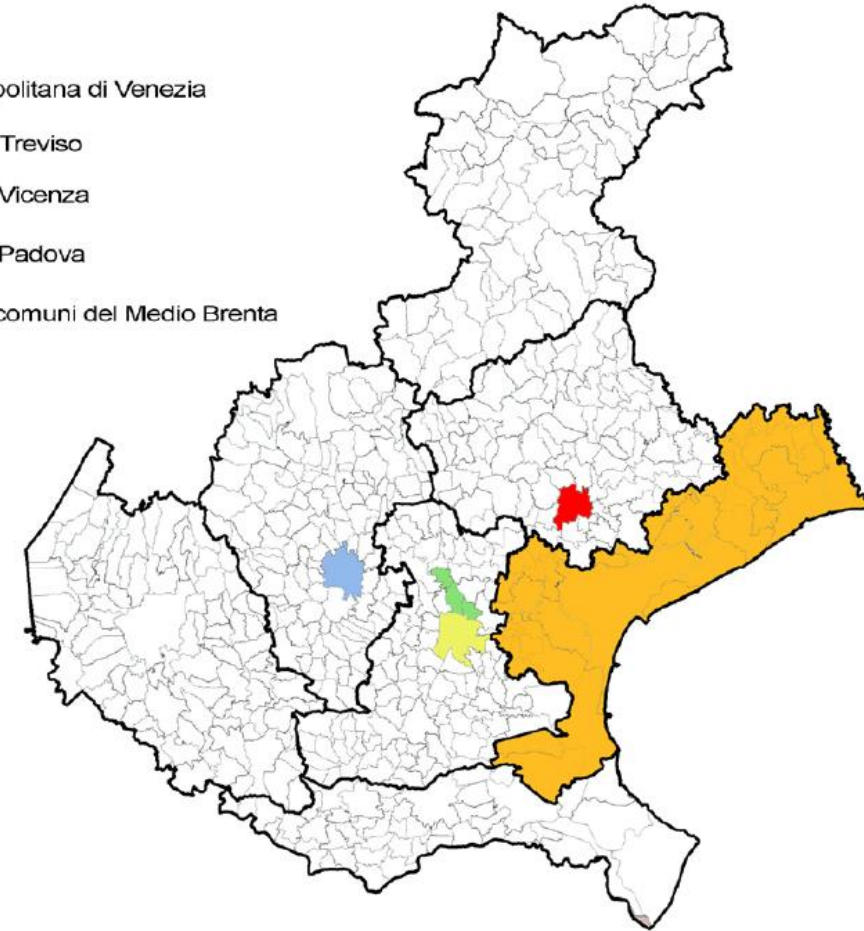
Comune di Padova

Padova Municipality
Coordinator + Vicenza,
Treviso, Metropolitan Area
of Venice and Medio Brenta
Union of Municipalities



SOGESCA together with
IUAV technical partner for
SECAP development and
implementation

-  Città Metropolitana di Venezia
-  Comune di Treviso
-  Comune di Vicenza
-  Comune di Padova
-  Unione dei comuni del Medio Brenta



Fonte: Elaborazione IUAV



THE PROJECT



A1. Shaping of the joint adaptation strategy

A2. State of the art assessment

C1. Planning: from SEAP to SECAP

C2. Development of wide area adaptation instruments

C3. Pilot Actions: application of new instruments and technologies for adaptation to climate change

C4. Replicability and transferability

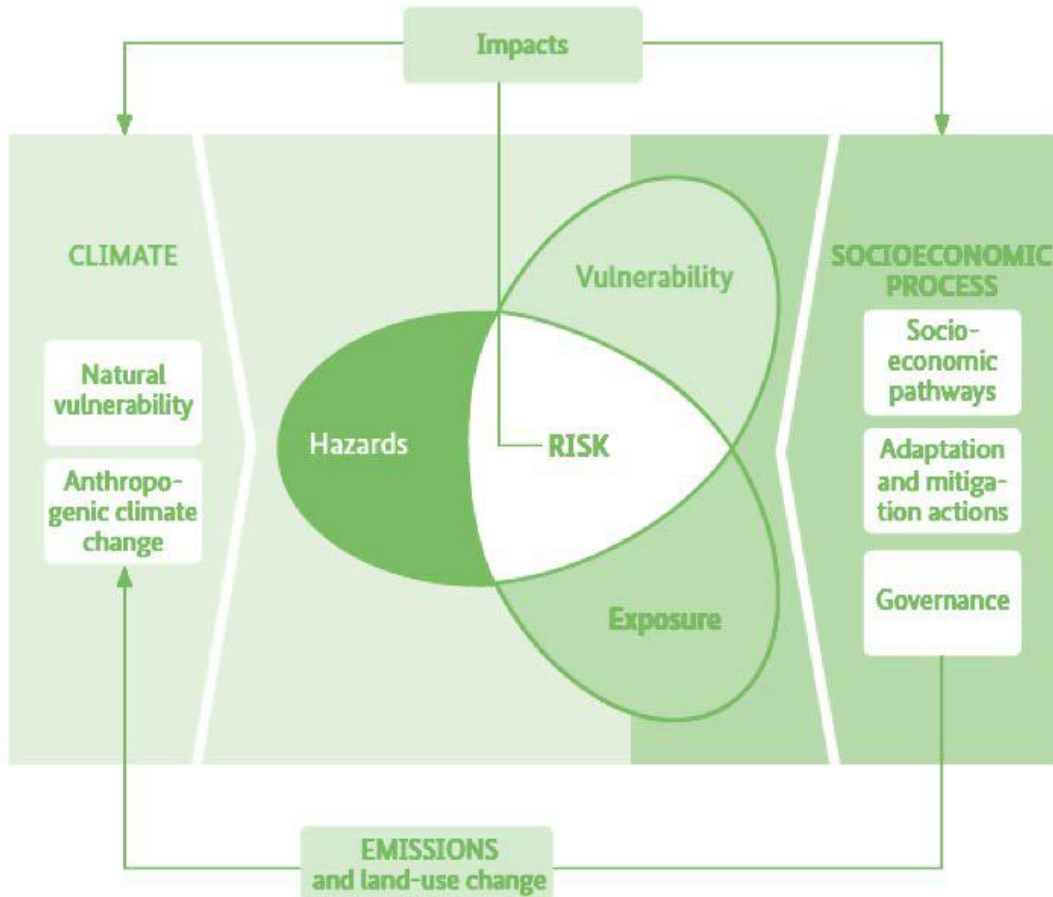
E1. Communication and dissemination of results



LIFE16 CCA/IT/000090

KEY CONCEPTS

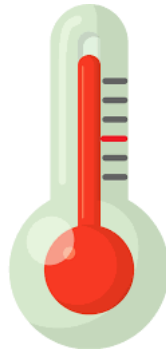
Illustration of the key concepts proposed by the Intergovernmental Panel on Climate Change (IPCC, 2014)



- **Hazard:** source of danger.
- **Vulnerability:** it is determined on the basis of sensitivity and adaptive capacity.
- **Exposure:** presence of people, means of subsistence, species and ecosystems, environmental functions, services, and resources, infrastructures, or economic, social and cultural assets in places and contexts that could be negatively affected
- **Risk:** the potential associated with consequences. The risk results from the interaction between **vulnerability**, **exposure** and the **source of danger**.

KEY ELEMENTS – EXISTING MEASURES (A1.2)

Hazards



Measures analysis

- **Coping:** intervention strategy with respect to emergencies aimed at restoring the previous state.
- **Incremental:** improvement measure dedicated to changing the environment in which the problem was generated
- **Transformative:** a measure capable of substantially modifying the damaged area and the area in which the climatic event that created the damage occurred.

KEY ELEMENTS – EXISTING MEASURES (A1.2)

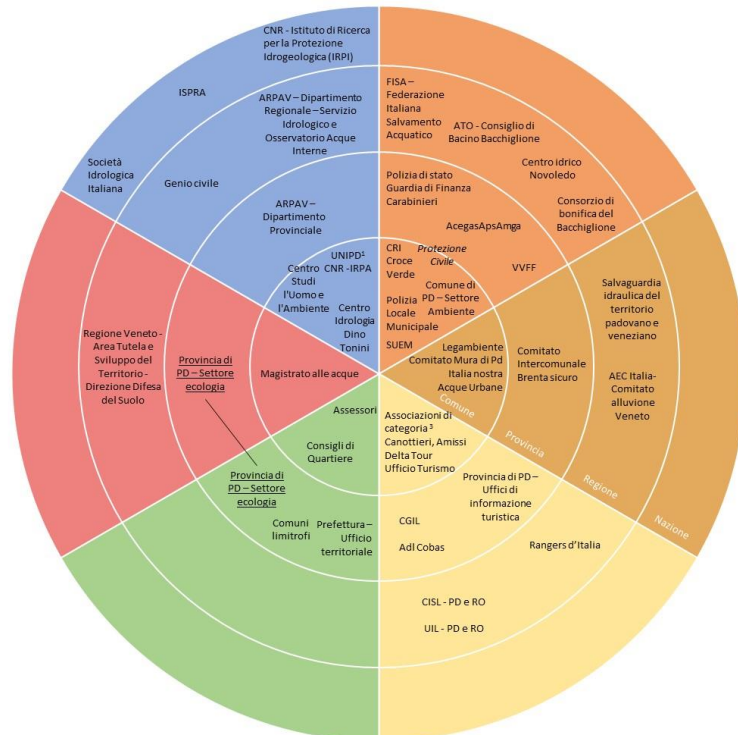
	Choise	CMVE	VI	PD	TV	UCMB
Hazards	Heat	12	71	39	7	133
	Water	19	140	61	40	82
Measures	Coping	7	29	5	13	11
	Incremental	10	146	68	8	51
	Trasformative	14	36	27	26	153
Expected results	Impact reduction	18	171	84	33	161
	Dispersion of the phenomenon	5	2	11	3	41
	Self-protection of citizens	1	0	2	10	9
	Response times (intervention and information)	0	26	0	0	0
	Monitoring and mapping	7	10	3	0	4

	Choise	CMVE	VI	PD	TV	UCMB
Implementati on timeline	Expected	7	58	32	7	46
	Ongoing	15	8	0	24	22
	Completed	9	145	68	16	145
Measure typology	Fisical	16	21	79	43	165
	Organizational	15	188	12	0	34
	Economical	0	2	9	0	16
Effectiveness	Ordinary Events	8	169	3	0	15
	Extraordinary events: return time 5-10 years	7	40	9	1	36
	Extraordinary events: return time 30-50 years	16	0	12	37	126
	Extraordinary events: return time 100-300 years	0	2	12	9	38



KEY ELEMENTS – GOVERNANCE (A1.3)

Governance Map – Acqua – Padova



----- Linea di collegamento tra portatori di interessi presenti in diversi settori (es. Distretto idrografico)

Portatore di interesse presente a diversi livelli, all'interno dello stesso settore (es. Protezione civile)

Presenza contemporanea dello stesso portatore in diversi settori

NOTE

- 1: Dipartimento di Geoscienze
- 2: Dipartimento per il Servizio Geologico d'Italia Servizio per la geologia applicata, la pianificazione di bacino e la gestione del rischio idrogeologico, l'idrodinamica delle acque sotterranee, Dipartimento per il monitoraggio e la tutela dell'ambiente e per la conservazione della biodiversità
- 3: Coldiretti, CIA, Confagricoltura, Camera di Commercio, CONFAPI, CNA, ASCOM, Confesercenti, Confindustria, UPA, APPE, Consorzio ZIP, Confcooperative

■ Corpi ed enti operativi ■ Saperi locali non organizzati ■ Portatori di interessi ■ Decisori politici ■ Soggetti autori di ordinamento e pianificazione ■ Saperi esperti

Governance Map – Calore – Padova



----- Linea di collegamento tra portatori di interessi presenti in diversi settori (es. Distretto idrografico)

Portatore di interesse presente a diversi livelli, all'interno dello stesso settore (es. Protezione civile)

Presenza contemporanea dello stesso portatore in diversi settori

NOTE

- 1: Dipartimento di Tecnica e Gestione dei sistemi industriali

■ Corpi ed enti operativi ■ Saperi locali non organizzati ■ Portatori di interessi ■ Decisori politici ■ Soggetti autori di ordinamento e pianificazione ■ Saperi esperti



LIFE16 CCA/IT/000090



Veneto ADAPT

METHODOLOGY

Qualitative methodology (VI, TV, UCMB)

The information levels used and represented in the mappings, they come from official databases available on the IDT cartographic portal of the Veneto region and the USGS portal (as far as regards the processes of analysis with techniques of remote-sensing and NDVI calculation).

This approach allows, even in the absence of specific analyzes such as Lidar flights and surveys precise, to arrive at understanding which areas can be potentially vulnerable to alluvial phenomena and waves and islands of heat.

Quantitative methodology (PD, VI, CMV)

The initial phase of the work was determined from the creation of a surface atlas permeable and non-permeable at urban level, focusing in a special way on urban green classification. This analysis highly specific and derived from the new ones geo-spatial instrumentation allowed to create new information levels through identification and mapping of the different urban elements characterized in:

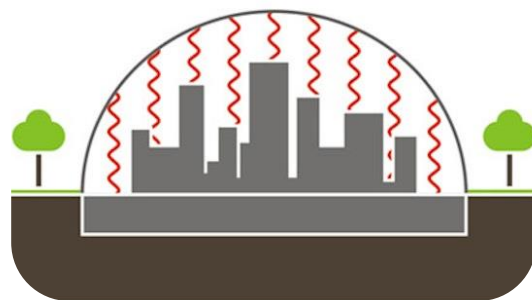
- **green on the ground**
 - **trees**
 - **buildings**
- **waterproof surface**



KEY ELEMENTS – RISKS (A2)



Floods and extreme precipitation



Extreme heat and heat island effect

+ other vulnerabilities and risks as requested by the CoM

Climate Hazard Type	<< Current Risks >>		<< Anticipated Risks >>		Risk-related indicators
	Current hazard risk level	Expected change in intensity	Expected change in frequency	Timeframe	
<u>Extreme Heat</u>	Moderate	Increase	No change	Short-term	The number of heat wave days will increase to 30 or even 50
<u>Extreme Cold</u>	Low	No change	No change	Medium-term	
<u>Extreme Precipitation</u>	[Drop-Down]	[Drop-Down]	[Drop-Down]	[Drop-Down]	
<u>Floods</u>	High	Increase	Increase	Medium-term	Pluvial flooding
<u>Sea Level Rise</u>	[Drop-Down]	[Drop-Down]	[Drop-Down]	[Drop-Down]	
<u>Droughts</u>	[Drop-Down]	[Drop-Down]	[Drop-Down]	[Drop-Down]	
<u>Storms</u>	[Drop-Down]	[Drop-Down]	[Drop-Down]	[Drop-Down]	Severe wind, rain storm
<u>Landslides</u>	High	No change	Increase	Current	
<u>Forest Fires</u>	[Drop-Down]	[Drop-Down]	[Drop-Down]	[Drop-Down]	
<u>Other</u>	[please specify]	[Drop-Down]	[Drop-Down]	[Drop-Down]	

① Hide the rows that do not concern your local authority
② To be completed for the climate hazards that concern your local authority only.
③ Click here to see examples of risk-related indicators

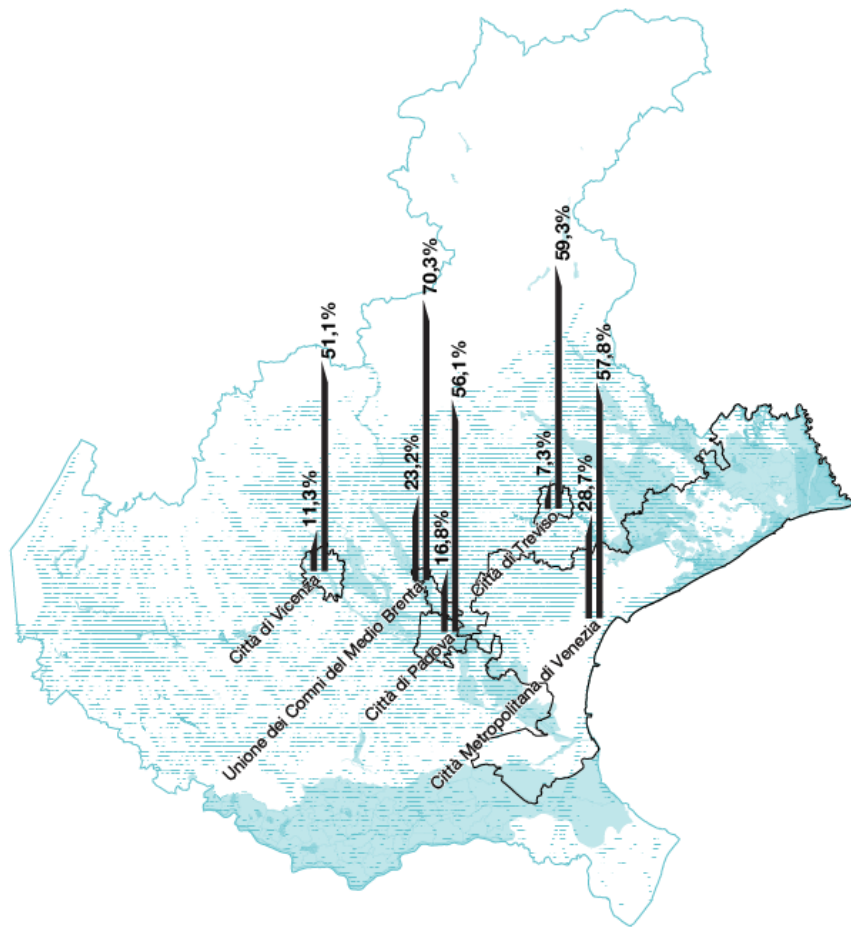


LIFE16 CCA/IT/000090



Veneto ADAPT

KEY ELEMENTS – STATE OF THE ART ASSESSMENT (A2)



percentuale territori sensibili ad allagamenti e alluvioni

percentuale aree urbane potenzialmente sensibili a ondate e isole di calore

potenziali ondate e isole di calore urbane

allagamenti e alluvioni T.R - 300

REGIONE VENETO

1714 kmq
territori sensibili ad alluvioni e allagamenti

1565 kmq
aree urbane sensibili a ondate e isole di calore

fonti:

MUNICIPALITÀ TARGET



111 kmq
29%



294 kmq
57%

Aree a pericolosità idraulica (ISPRA)

Uso del Suolo Regione Veneto - livello 1.1 anno 2012 (portale cartografico IDT - Regione Veneto)

Unione dei Comuni del Medio Brenta

23,2%

70,3%

Comune di Treviso

7,3%

59,3%

Comune di Vicenza

11,3%

51,1%

Comune di Padova

16,8%

56,1%

Città Metropolitana di Venezia

28,7%

57,8%

territori sensibili/ sup. territoriale

tessuti urbano continuo/ teritori modellati artificialmete

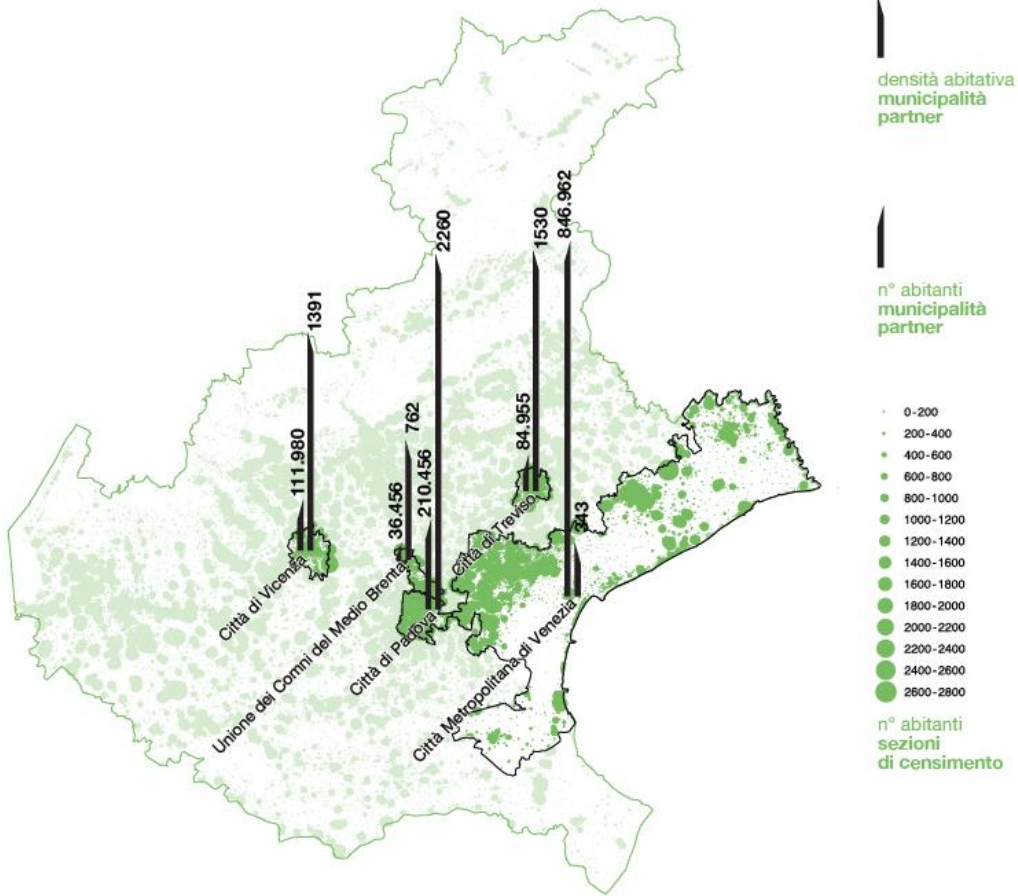


Veneto ADAPT



LIFE16 CCA/IT/000090

KEY ELEMENTS – STATE OF THE ART ASSESSMENT (A2)



REGIONE
VENETO

4.903.722
VENETO:
N° ABITANTI_REGIONE



MUNICIPALITÀ
TARGET

1.269.501
MUNICIPALITÀ PARTNER:
N° ABITANTI_TOTALI

fonti:

Censimento della popolazione - anno 2011 - Regione Veneto (ISTAT)

Sezioni di censimento - anno 2011 - Regione Veneto (ISTAT)

Unione dei Comuni del Medio Brenta	36.456	762
Comune di Treviso	84.955	1530
Comune di Vicenza	111.980	1391
Comune di Padova	210.456	2260
Città Metropolitana di Venezia	846.962	343

n° abitanti

n° abitanti/
superficie
territoriale



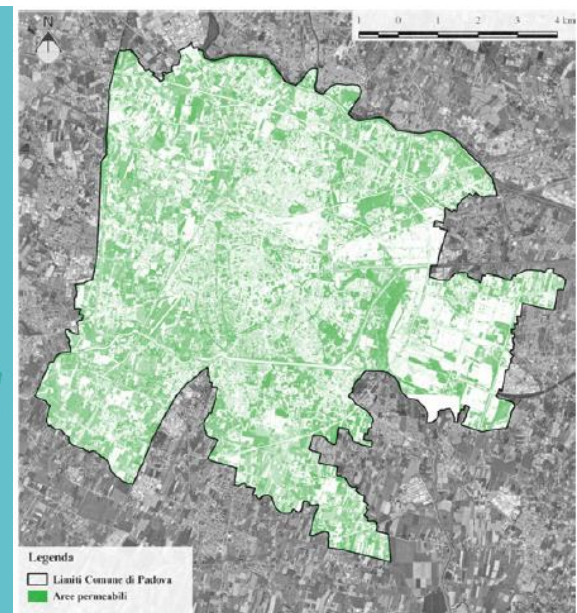
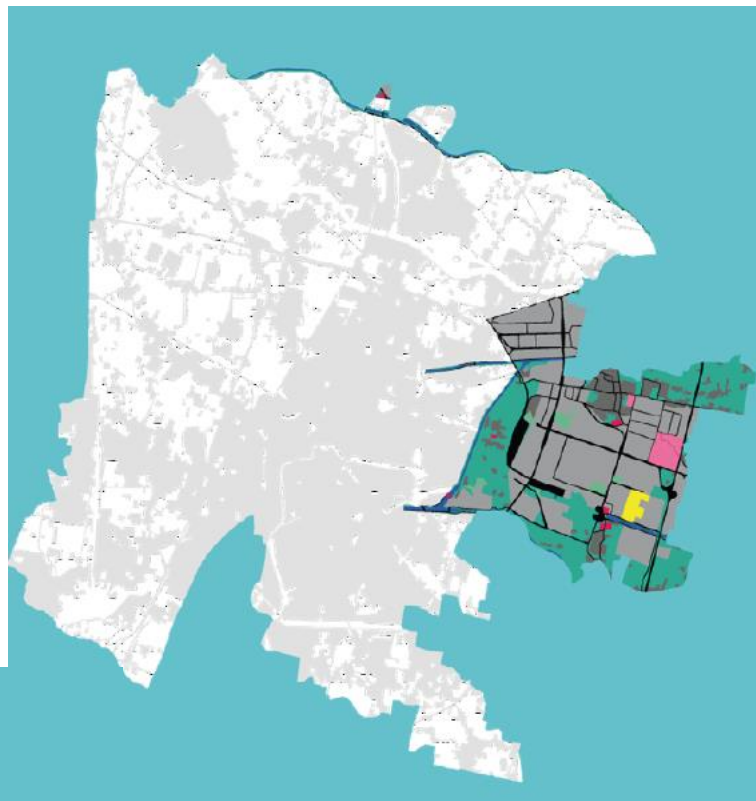
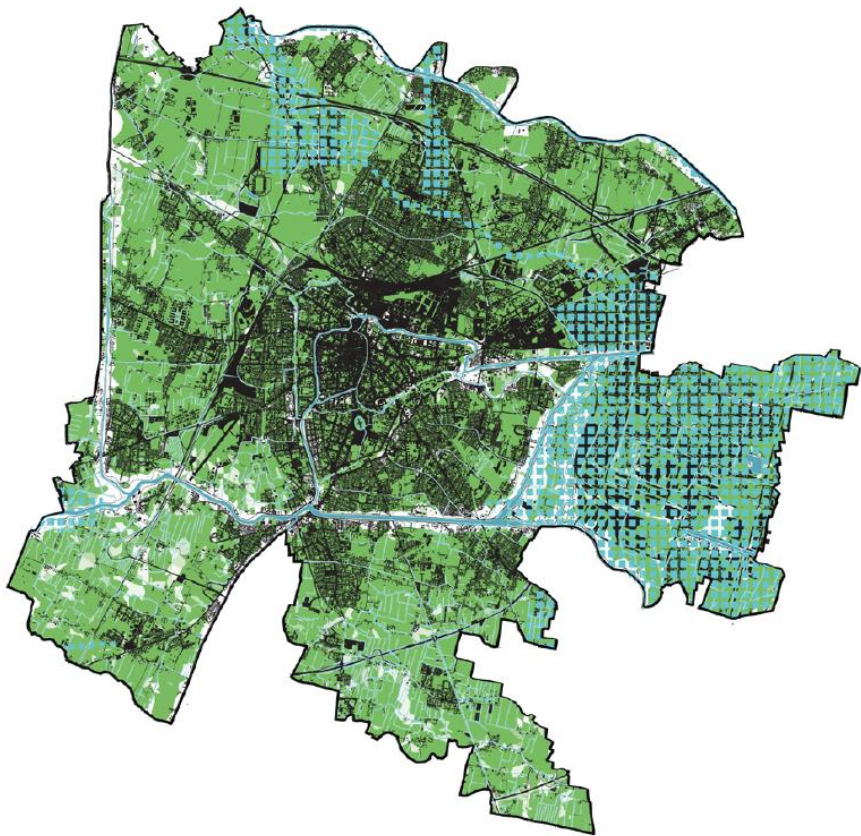
LIFE16 CCA/IT/000090



Veneto
ADAPT

CASE STUDY - PADOVA

- Hazard: floods and flooding



- Acqua
- Agricoltura e verde
- Altro
- Cave
- Commercio e servizi ricreativi
- Edifici
- Industria
- Protezione Civile e Soccorso
- Rifiuti
- Trasporti



LIFE16 CCA/IT/000090

CASE STUDY - PADOVA




• Hazard: floods and flooding - Measures

Implemented and planned measures
(City intervention plan)

Ente > Comune di Padova

Nome della misura

Norme e prescrizioni generali di manutenzione e salvaguardia nelle aree soggette a dissesto idrogeologico (aree esondabili o a ristagno idrico) - manutenzione fossati - vie di deflusso stradale

TIPO DI MISURA	INTERVENTO	TEMPI	EFFETTO ATTESO	
 COPING	 FISICA	 PREVISTA	 RIDUZIONE IMPATTO	 INTERVENTO IN EMERGENZA
 INCREMENTAL	 ORGANIZZATIVA	 IN CORSO	 DISPERSIONE FENOMENO	 MONITORAGGIO MAPPATURA
 TRANSFORMATIVE	 ECONOMICA	 REALIZZATA	 AUTOPROTEZIONE CITTADINI	

Ente > Comune di Padova

Nome della misura

Requisiti fondamentali dello sviluppo insediativo della "Città da trasformare": contiguità con il tessuto urbanizzato, rispetto dei valori ambientali e tutela delle aziende agricole vitali non contrastanti con rilevanti interessi pubblici strategici

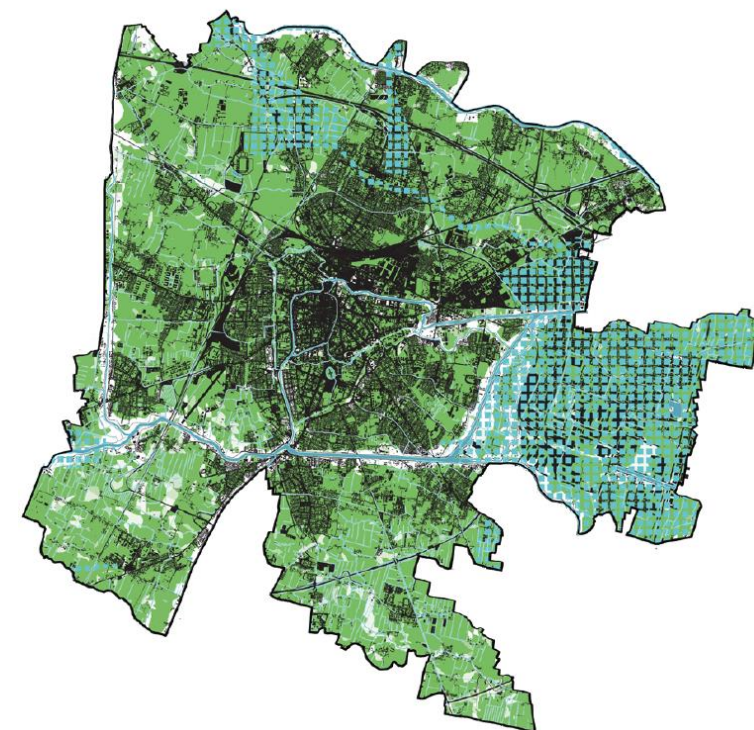
TIPO DI MISURA	INTERVENTO	TEMPI	EFFETTO ATTESO	
 COPING	 FISICA	 PREVISTA	 RIDUZIONE IMPATTO	 INTERVENTO IN EMERGENZA
 INCREMENTAL	 ORGANIZZATIVA	 IN CORSO	 DISPERSIONE FENOMENO	 MONITORAGGIO MAPPATURA
 TRANSFORMATIVE	 ECONOMICA	 REALIZZATA	 AUTOPROTEZIONE CITTADINI	

Ente > Comune di Padova

Nome della misura

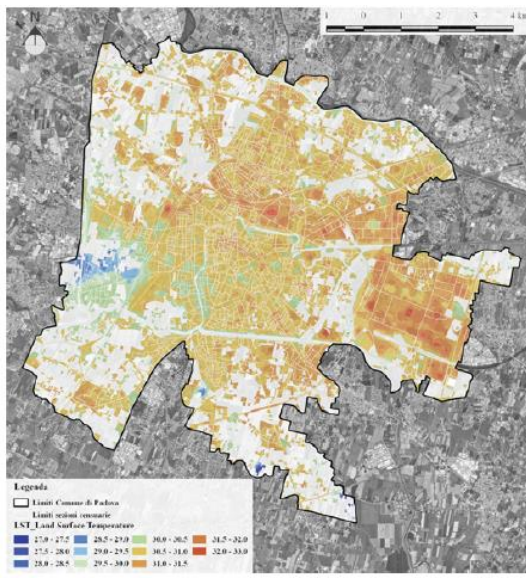
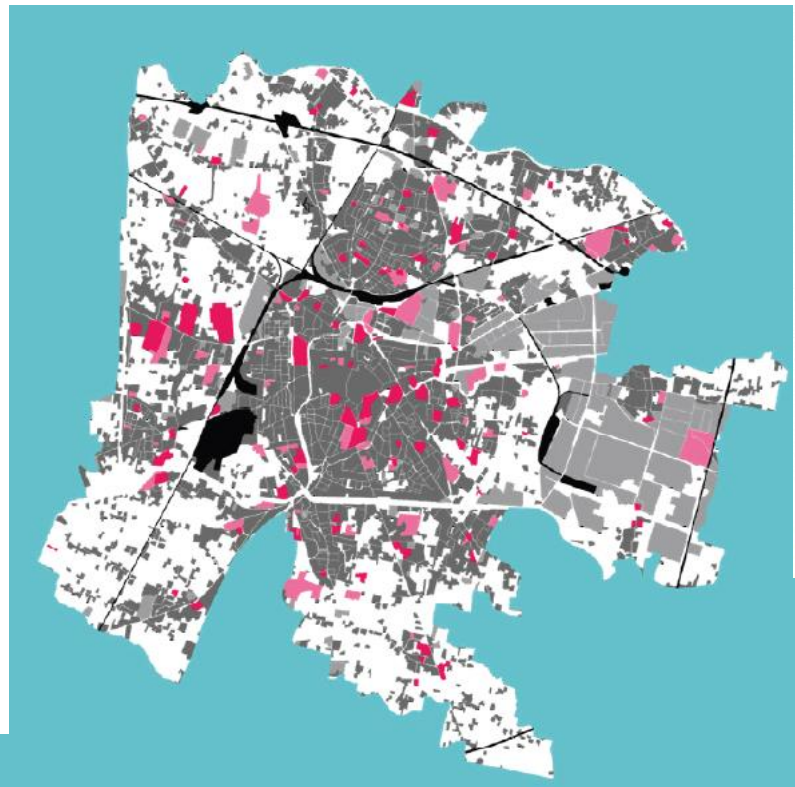
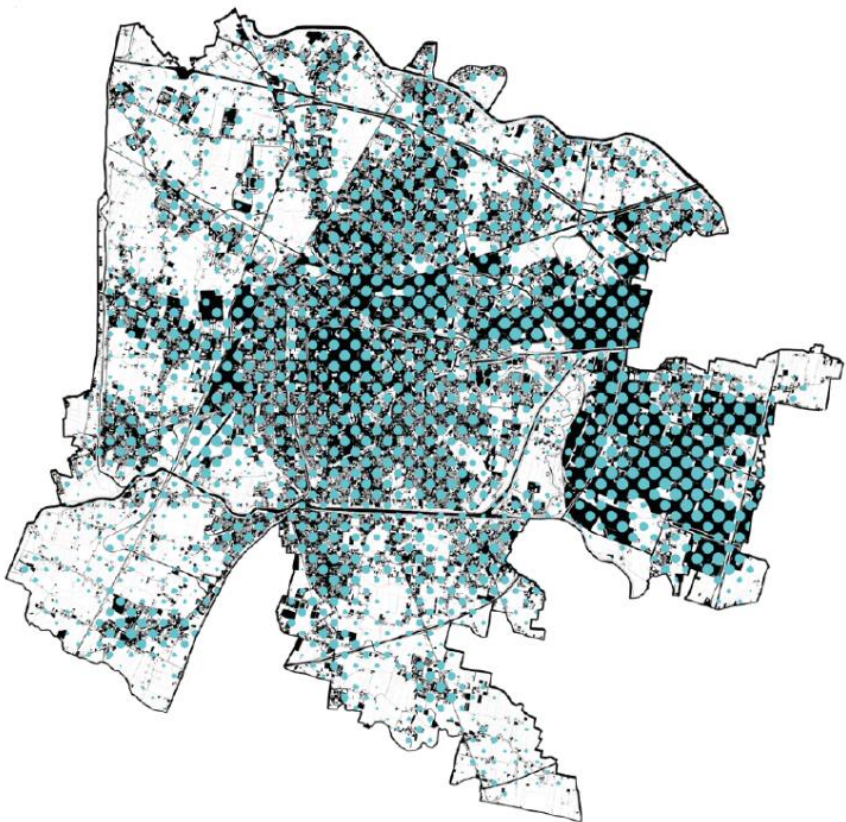
Istituzione di parchi fluviali agricoli

TIPO DI MISURA	INTERVENTO	TEMPI	EFFETTO ATTESO	
 COPING	 FISICA	 PREVISTA	 RIDUZIONE IMPATTO	 INTERVENTO IN EMERGENZA
 INCREMENTAL	 ORGANIZZATIVA	 IN CORSO	 DISPERSIONE FENOMENO	 MONITORAGGIO MAPPATURA
 TRANSFORMATIVE	 ECONOMICA	 REALIZZATA	 AUTOPROTEZIONE CITTADINI	



CASE STUDY - PADOVA

- Hazard: heat island (extreme heat category)



LIFE16 CCA/IT/000090

CASE STUDY - PADOVA







• Hazard: heat island (extreme heat category) - Measures

Planned measures
(City intervention plan)

Ente > Comune di Padova

Nome della misura









Applicazione credito edilizio per realizzazione attrezzature e miglioramento qualità urbana

TIPO DI MISURA	INTERVENTO	TEMPI	EFFETTO ATTESO	
 COPING	 FISICA	 PREVISTA	 RIDUZIONE IMPATTO	 INTERVENTO IN EMERGENZA
 INCREMENTAL	 ORGANIZZATIVA	 IN CORSO	 DISPERSIONE FENOMENO	 MONITORAGGIO MAPPATURA
 TRANSFORMATIVE	 ECONOMICA	 REALIZZATA	 AUTOPROTEZIONE OTTAGNI	

Ente > Comune di Padova

Nome della misura







Indici di permeabilità e ambientali per la zona polifunzionale artigianale commerciale

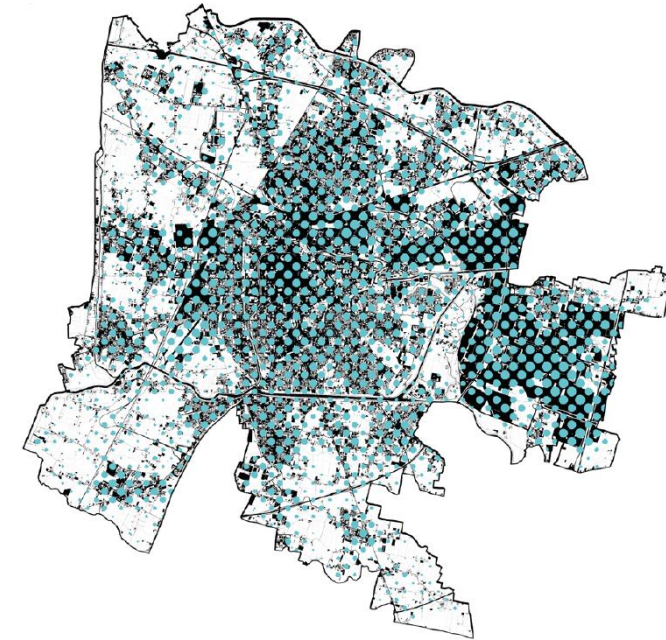
TIPO DI MISURA	INTERVENTO	TEMPI	EFFETTO ATTESO	
 COPING	 FISICA	 PREVISTA	 RIDUZIONE IMPATTO	 INTERVENTO IN EMERGENZA
 INCREMENTAL	 ORGANIZZATIVA	 IN CORSO	 DISPERSIONE FENOMENO	 MONITORAGGIO MAPPATURA
 TRANSFORMATIVE	 ECONOMICA	 REALIZZATA	 AUTOPROTEZIONE OTTAGNI	

Ente > Comune di Padova

Nome della misura

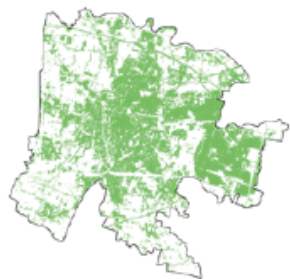
Parco per impianti sportivi e attrezzature di interesse territoriale, tra cui un parco agrario

TIPO DI MISURA	INTERVENTO	TEMPI	EFFETTO ATTESO	
 COPING	 FISICA	 PREVISTA	 RIDUZIONE IMPATTO	 INTERVENTO IN EMERGENZA
 INCREMENTAL	 ORGANIZZATIVA	 IN CORSO	 DISPERSIONE FENOMENO	 MONITORAGGIO MAPPATURA
 TRANSFORMATIVE	 ECONOMICA	 REALIZZATA	 AUTOPROTEZIONE OTTAGNI	



CASE STUDY - PADOVA

- Hazards: results



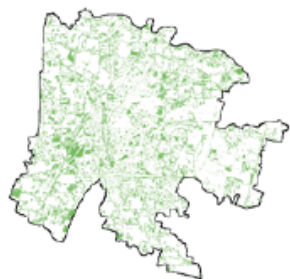
suoli impermeabili

58,7%
32,7 kmq



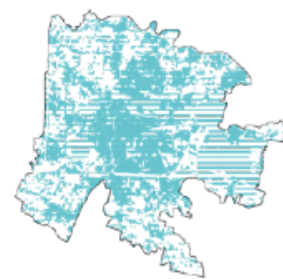
alluvioni T.R. 300

16,8%
15,7 kmq



suoli con vegetazione

41,3%
22,9 kmq



incidenza termica

56,1%
31,3 kmq



OVERALL TARGETS



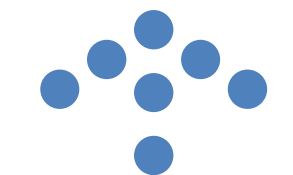
Comune di Padova



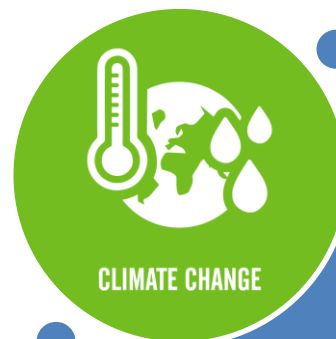
Comune di Treviso



Unione Comuni Medio Brenta



2030 targets CoM



Adaptation to climate change



Mitigation



LIFE16 CCA/IT/000090



Veneto ADAPT

LET'S KEEP IN TOUCH!

Veneto Adapt

info@venetoadapt.it
www.venetoadapt.it



Referente di progetto:

Daniela Luise

c/o Comune di Padova

Ufficio Agenda 21 c/o Informambiente

Comune di Padova – Settore Ambiente e Territorio

e-mail: venetoadapt@comune.padova.it

Facebook



Twitter

Tweet di [@venetoadapt](https://twitter.com/venetoadapt)



SOGESCA

e.cosenza@sogesca.it



LIFE16 CCA/IT/000090

