

D.C.3.6 ONLINE KNOWLEDGE EXCHANGE PLATFORM

Platform development and FAQ

09 2021



**Eberswalde University
for Sustainable
Development**



**NATIONALPARK
KALKALPEN**

STAATLICH
ANERKANNTER
ERHOLUNGSSORT

Angermünde
echt.natürlich



PAKLENICA
Nacionalni park
National Park



Let's
get
Wild!



**ZAVOD za GOZDOVE
SLOVENIJE**
Slovenia Forest Service





Summary of the working process

The knowledge exchange platform has been developed by the BEECH POWER consortium to support knowledge exchange, international communication, data sharing and contact establishment, through the creation of an online platform/forum for involved PA managers. The platform was developed jointly with BEECH POWER partners Eberswalde University of Sustainable Development, European Wilderness Society and the Coordination office of the WH site at the Sonian Foundation in Belgium. The involved parties met multiple times through the course of the spring and autumn of 2021 and discussed the best possible platform to be selected for this pilot initiative, as well as updated the contact mailing list. Using the updated list, the parties developed a questionnaire sent out to all State Parties and component parts, to identify the needs and expectations of the target group from such a platform. This is the summary of the questionnaire:

Summary BEECH POWER knowledge exchange platform questionnaire

20 responses

Name of component part:

- Abruzzo Lazio and Molise National Park (Italy)
- Buchenwald Grumsin (Germany)
- Chornohora (Ukraine, CBR)
- Comune di Soriano Nel Cimino (Italy)
- Forest Reserve Virgin Forest Krokav (Slovenia)
- Grippensdelle Sonian Forest (Belgium)
- Hajdučki i Rožanski kukovi (Croatia)
- Hayedos de Ayllón (Montejo de la Sierra, Spain)
- Hayedos de Picos de Europa (Cuesta Fría y Canal de Asotín, Spain)
- Kalkalpen National Park (Austria) x2
- Krokav and Snežnik (Slovenia)
- Monte Raschio (Italy)
- Nature Reserve Gorgany (Ucrania) x2
- PR Vihorlatské vrchy (Slovakia)
- Poloniny National Park (Slovakia)
- Riserva naturale Sasso Fratino (Italy)
- Serbia (5 component parts)
- Sonian Forest (Belgium)

How important do you find knowledge exchange in the following topics? (Using the scale of 0=not at all important to 5=very important)

Updates on recent development of EU policies (e.g. Biodiv. Strategy, Forest Strategy...)

- 5 = 7 responses
- 4 = 8 responses
- 3 = 5 responses

Fundraising (current calls, announcement of upcoming calls)

- 5 = 8 responses
- 4 = 3 responses
- 3 = 3 responses
- 2 = 6 responses

Science (new publications on European beech forests, old-growth forests)



- **5 = 15 responses**
- 4 = 4 responses
- 2 = 1 response

Local and national awareness raising activities

- **5 = 8 responses**
- **4 = 8 responses**
- 3 = 3 responses
- 1 = 1 response

Education activities

- **5 = 12 responses**
- 4 = 4 responses
- 3 = 3 responses
- 0 = 1 response

Marketing activities

- 5 = 4 responses
- 4 = 4 responses
- **3 = 6 responses**
- 2 = 3 responses
- 1 = 1 response
- 0 = 2 responses

Communication and branding

- 5 = 7 responses
- **4 = 9 responses**
- 3 = 1 response
- 2 = 2 responses
- 1 = 1 response

Visitor communication

- **5 = 9 responses**
- 4 = 7 responses
- 3 = 3 responses
- 2 = 1 response

UNESCO WHS vs. Natura 2000

- **5 = 10 responses**
- 4 = 5 responses
- 3 = 4 responses
- 2 = 1 response

Monitoring protocols (e.g. for specific species identified as indicators)

- **5 = 10 responses**
- 4 = 5 responses
- 3 = 4 responses
- 2 = 1 response

Institutional capacity building (regarding the management of the WHS)

- **5 = 11 responses**
- 4 = 3 responses
- 3 = 5 responses
- 2 = 1 response

Are you currently using any document management and collaboration tools for work purposes?



- Yes: 13 responses (65%)
- No: 7 responses (35%)

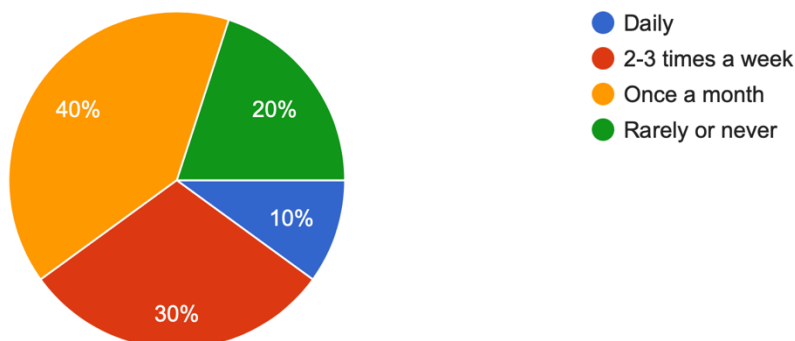
What tool(s) do you use today to collaborate, manage and share documents?

- Teams: 6 responses
- Sharepoint: 3 responses
- Zoom: 2 responses
- Google Drive: 2 responses
- Dropbox: 1 response
- Wetransfer: 1 response
- Onedrive: 1 response
- Webex: 1 response

For which purpose do you use it?

- Digital meetings (6 responses)
- Sharing documents, tools, information and data (6 responses)
- Working together on documents (5 responses)
- Large files sharing (1 response)

How often would you use the knowledge exchange platform?



How many users from your component part should be invited to collaborate in the tool?

1 = 3 responses

2-3 = 4 responses

3 = 5 responses

A few = 2 responses

5 = 2 responses

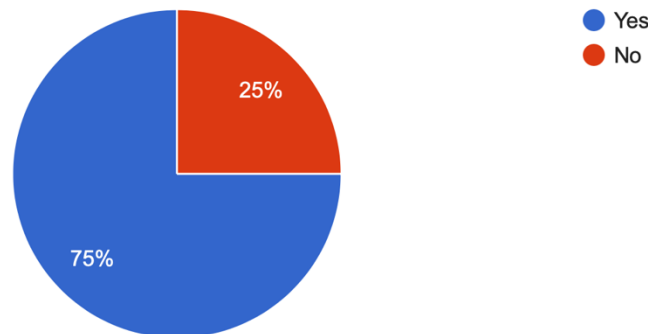
10 = 1 response

Approx. 5-10 users (management team, forest unit head, technical director, representative from ministry, etc.) = 2 response

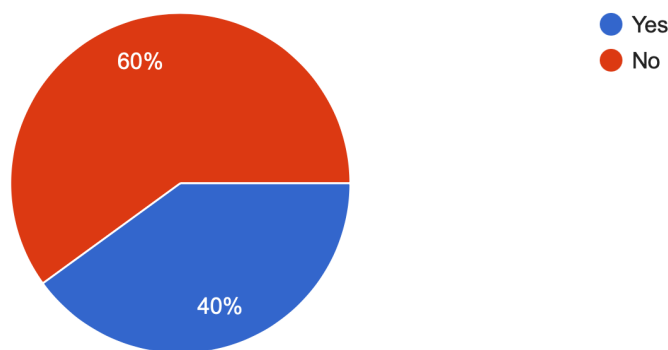
According to interest = 1 response



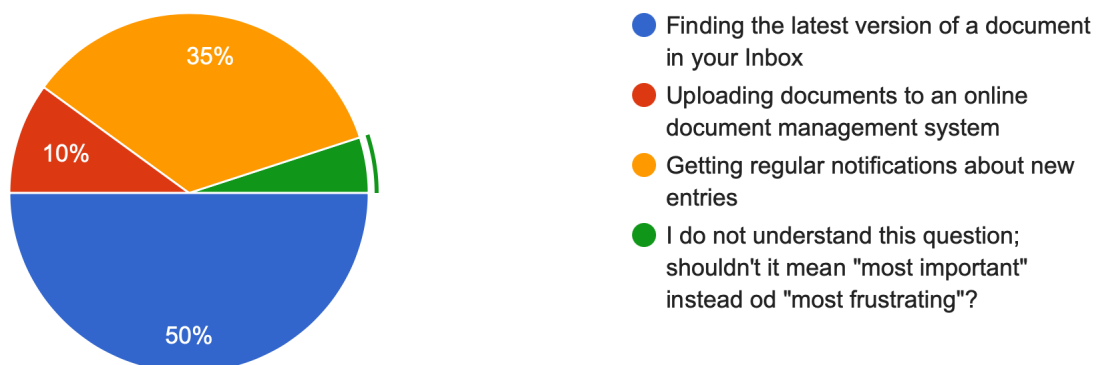
Are you feeling comfortable communicating in English language when collaborating online?



Will we be missing valuable contributions from your team members with a platform in English?



What do you find the most frustrating when collaborating on documents?



Please rate the benefits you see from the knowledge exchange platform between component parts for your component part (0=not at all important to 5=very important)

Ease of sharing and finding information

- 5 = 10 responses
- 4 = 3 responses
- 3 = 6 responses
- 2 = 1 responses

Increase knowledge exchange and learning on new activities/approaches



- **5 = 10 responses**
- 4 = 4 responses
- 3 = 5 responses
- 2 = 1 responses

No clutter in my inbox

- 5 = 5 responses
- 4 = 4 responses
- **3 = 8 responses**
- 2 = 3 responses

Faster response from peers, international colleagues and experts

- 5 = 5 responses
- **4 = 7 responses**
- 3 = 6 responses
- 2 = 1 response
- 1 = 1 response

Staying organized

- 5 = 4 responses
- 4 = 5 responses
- **3 = 7 responses**
- 2 = 2 responses
- 1 = 1 response
- 0 = 1 response

Reaching a wide audience without email

- **5 = 6 responses**
- **4 = 6 responses**
- 3 = 4 responses
- 2 = 2 responses
- 1 = 2 responses

Displaying information visually in one platform

- 5 = 6 responses
- **4 = 9 responses**
- 3 = 3 responses
- 2 = 1 response
- 0 = 1 response

Create a sense of team

- **5 = 7 responses**
- 4 = 5 responses
- 3 = 6 responses
- 2 = 1 response
- 0 = 1 response

Supporting the cooperation between component parts of the joint WHS

- **5 = 8 responses**
- 4 = 7 responses
- 3 = 2 responses
- 2 = 2 responses
- 1 = 1 response

Staying up-to-date with all the novelties and activities

- **5 = 10 responses**
- 4 = 4 responses
- 3 = 4 responses
- 2 = 1 response
- 1 = 1 response



What features would you like to see in the platform?

Document management/storage and sharing

- Most important = 9 responses
- **Important = 10 responses**
- Somewhat important = 1 response

Co-working on documents, commenting

- Most important = 9 responses
- **Important = 10 responses**
- Somewhat important = 1 response

Task management

- Most important = 3 responses
- **Important = 9 responses**
- Somewhat important = 7
- Not important = 1 response

Video conferencing

- Most important = 2 responses
- **Important = 8 responses**
- Somewhat important = 6
- Not important = 4 responses

Event notifications

- Most important = 3 responses
- Important = 8 responses
- **Somewhat important = 9 responses**

Dashboards

- Most important = 1 response
- **Important = 10 responses**
- Somewhat important = 5 responses
- Not important = 4 responses

Discussion function

- Most important = 1 response
- **Important = 12 responses**
- Somewhat important = 5 responses
- Not important = 2 responses

Real-time Chat

- Most important = 2 response
- **Important = 6 responses**
- **Somewhat important = 6 responses**
- **Not important = 6 responses**

To-dos

- Most important = 2 response
- **Important = 10 responses**
- Somewhat important = 5 responses
- Not important = 3 responses

Calendar function

- Most important = 3 response
- Important = 6 responses
- **Somewhat important = 8 responses**
- Not important = 3 responses

Integration with other systems and tools (e.g. Dropbox, Zoom)

- Most important = 4 response



- Important = 6 responses
- **Somewhat important = 8 responses**
- Not important = 2 responses

File sync between devices

- Most important = 5 response
- **Important = 9 responses**
- Somewhat important = 6 responses

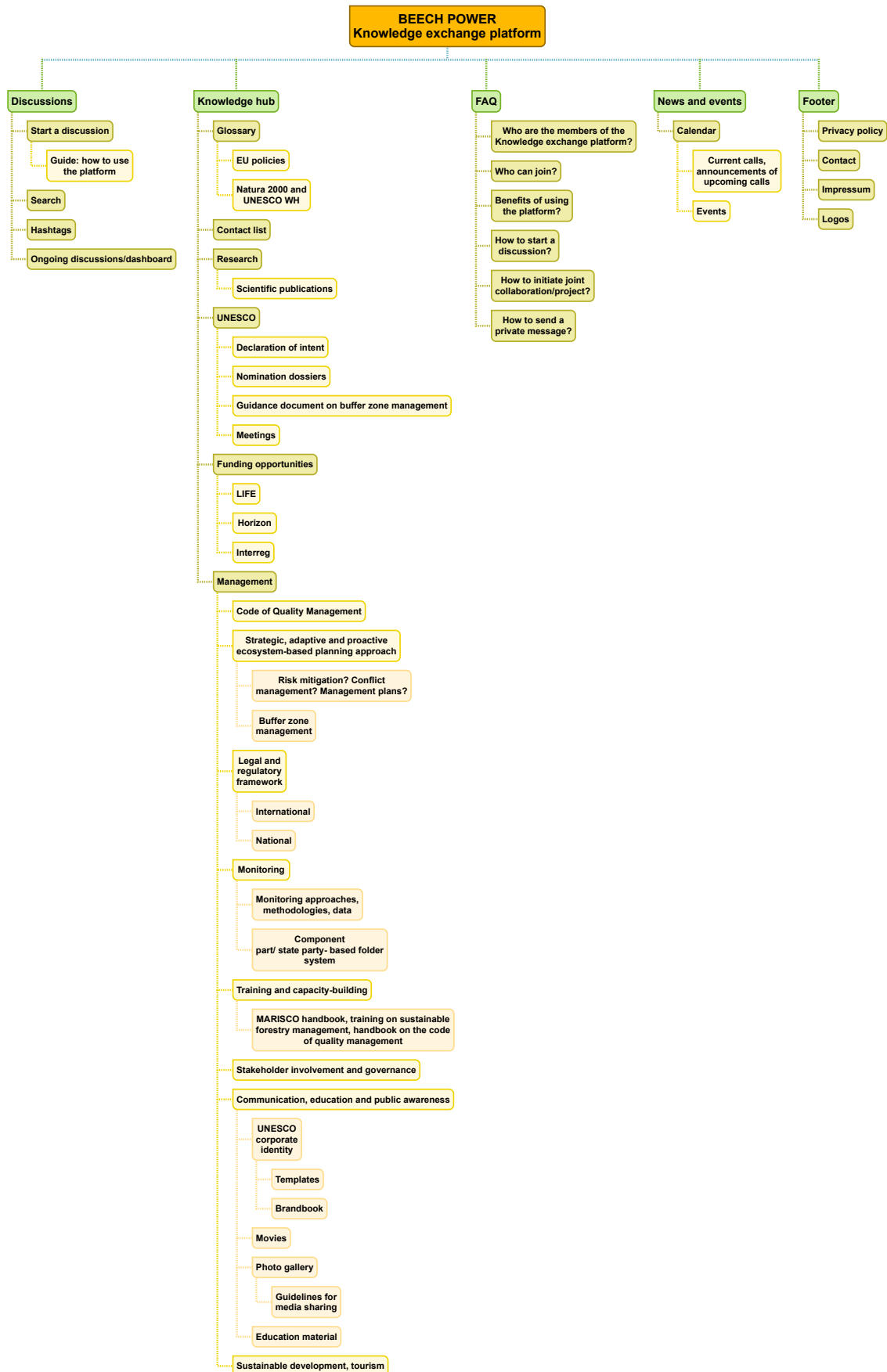
Mobile/Table support

- Most important = 3 response
- **Important = 9 responses**
- Somewhat important = 5 responses
- Not important = 3 responses

Please add any other comments on the knowledge exchange platform

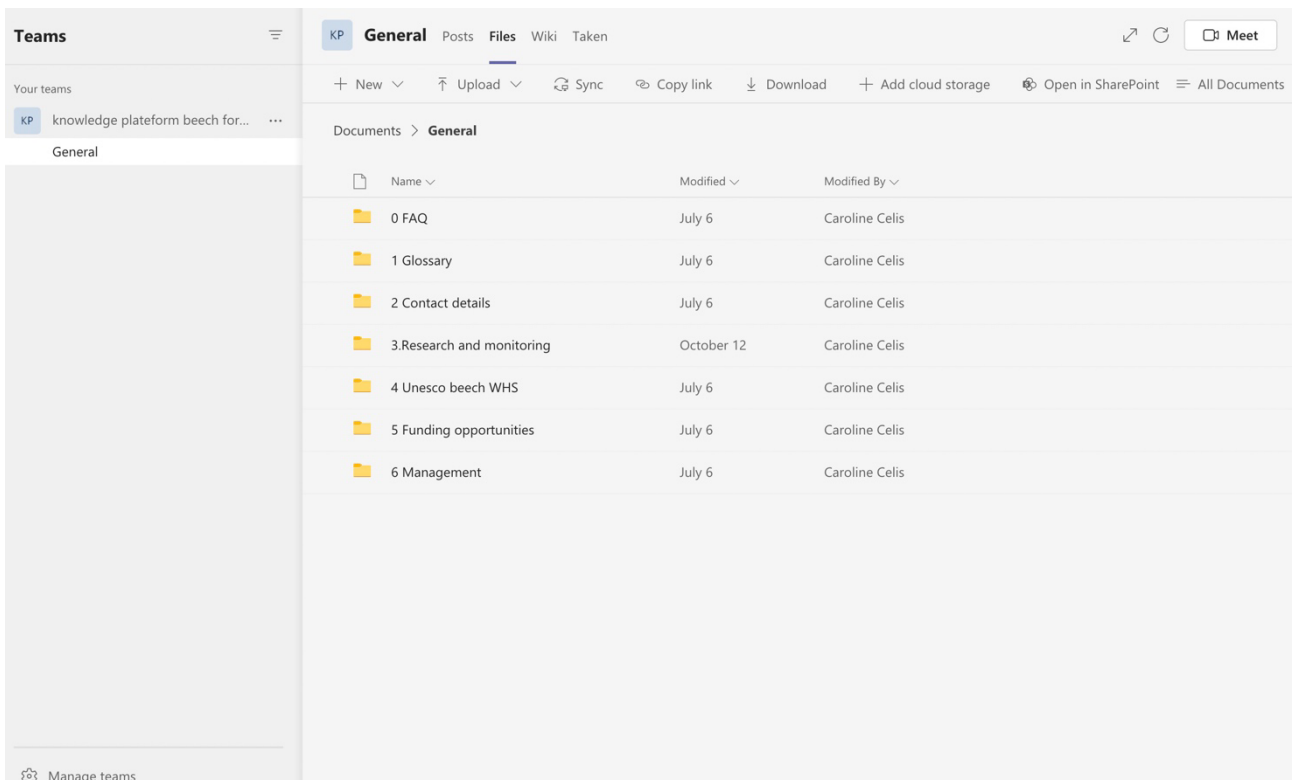
1. Unfortunately, the possibilities of providing a tool such as the one they propose are not, at the moment, within our reach. Our participation would therefore be very limited at this stage. Best regards and thank you very much (Hayedos de Ayllón, Spain)
2. A knowledge exchange platform would be a great step forward; we could learn on best practice from other WH component parts. (Kalkalpen National Park, Austria)
3. Development of such a platform will improve communication between WHS components, so we completely support such initiative. (Chornohora, Ukraine)

The brainstorming is summarized in the following Mindmap:





Based on the received feedback on usability of an online communication platform, the team decided that Microsoft Teams is the best platform to start with, and based on the evaluation of the pilot phase, the platform will be further developed. Therefore, it is temporarily included within a folder of the Microsoft Teams environment, currently maintained by the Coordination office of the WH site at the Sonian Foundation.



The screenshot shows the Microsoft Teams interface. On the left, the 'Teams' sidebar lists 'Your teams' with 'KP knowledge platform beech for...' selected. The main area shows the 'General' channel of this team. At the top, there are tabs for 'KP', 'General', 'Posts', 'Files', 'Wiki', and 'Taken'. Below the tabs is a toolbar with options: '+ New', 'Upload', 'Sync', 'Copy link', 'Download', 'Add cloud storage', 'Open in SharePoint', and 'All Documents'. The main content area displays a list of documents under the heading 'Documents > General'. The list has columns for 'Name', 'Modified', and 'Modified By'.

Name	Modified	Modified By
0 FAQ	July 6	Caroline Celis
1 Glossary	July 6	Caroline Celis
2 Contact details	July 6	Caroline Celis
3. Research and monitoring	October 12	Caroline Celis
4 Unesco beech WHS	July 6	Caroline Celis
5 Funding opportunities	July 6	Caroline Celis
6 Management	July 6	Caroline Celis

Below is the developed FAQ uploaded to the Knowledge exchange platform.



Knowledge exchange platform FAQ

Who are the members of the BEECH POWER Knowledge Exchange Platform?

The platform was initiated by partners involved in the BEECH POWER project, supported by the Coordination office of the UNESCO World Heritage site ‘Ancient and Primeval Beech Forests’:

Project Partners:

1. Eberswalde University for Sustainable Development (DE)
2. European Wilderness Society (AT)
3. Kalkalpen National Park (AT)
4. Public Institution Paklenica National Park (HR)
5. Angermünde City Administration (DE)
6. Slovenia Forest Service (SI)
7. National Forest Centre (SK)

Associated partners:

1. Austrian Federal Ministry of Sustainability and Tourism (AT)
2. Ministry of Rural Development, Environment and Agriculture of the Federal State of Brandenburg (MRDEA) (DE)
3. CEEweb for Biodiversity (HU)
4. State Nature Conservancy of the Slovak Republic (SK)
5. Hainich National Park (DE)
6. Biosphere Reserve Schorfheide-Chorin (DE)
7. Ministry of the Environment and Spatial Planning (SI)
8. Municipality Loška dolina (SI)
9. Municipality Kočevje (SI)
10. European Beech Forest Network e.V. (DE)
11. City of Starigrad (HR)
12. World Natural Heritage Beech Forest Grumsin e.V. (DE)
13. Ministry of Environment of the Slovak Republic (SK)

It is temporarily included within a folder of the Microsoft Teams environment, which is currently maintained by the coordination office of the WH site at the Sonian Foundation (BE).

It is open to all actors and practitioners from the World Heritage Beech Forest network, including the colleagues in the new States Parties.

Who can join the platform?

Anyone expressing interest in assisting the UNESCO World Heritage Site ‘Ancient and Primeval Beech Forests of the Carpathians and Other Regions of Europe’ can join the platform.

There is no special procedure for joining the platform, only expression of interest is required.

If you wish to join, please contact: Caroline Celis ccelis@sonianfoundation.be, Hanna Öllös at hanna.ollos@wilderness-society.org, Marcus Waldherr at Marcus.Waldherr@hnee.de and Julia Fleck at Julia.Fleck@hnee.de.



What are the benefits of the platform?

The platform aims to support communication and cooperation between protected area management teams and responsible public authorities of protected areas comprising the World Heritage component parts. It will provide members with free access to several World Heritage relevant documents and can be continuously updated with new information and data relating to this transnational serial World Heritage property and its component parts, under the following management-related topics:

1. Strategic, adaptive and proactive ecosystem-based planning
2. Legal and regulatory framework
3. Research and monitoring
4. Training and capacity building
5. Stakeholder involvement and governance
6. Communication, education and public awareness
7. Sustainable development, tourism

Joining the platform offers an opportunity to discuss and learn about policy and innovative practices in protected areas comprising UNESCO WH Beech Forest component parts. Furthermore, it enables all users to share information on their component part/protected area, e.g. best-practice examples, management plans, research results, education activities, etc. It offers possibilities for future cooperation through development of joint projects and initiatives, strategies and capacity building activities.

The aim of the BEECH POWER project with the creation of this pilot platform is to promote the relevant actors' interests and concerns, to create a platform for initiating a dialogue between relevant stakeholders, and to enable cooperation that will be of benefit for all participants through the exchange of knowledge and good practices. In the mid and long term, the knowledge exchange platform can be further developed, possibly in the context of another project.

How do I start a discussion?

In your Teams channel, go to the Posts tab and press "New conversation" to start a discussion. For more information, go to your computer's menu bar and select Help>Microsoft Teams Help>Topics>Browse help>Chat>Basics>Start a chat. In case you have detected a potential collaboration, please contact them for further developing the collaborative idea.

How do I send a private message?

You can send a private message to any members of the Team by selecting their icon and starting a chat. For more information, go to your computer's menu bar and select Help>Microsoft Teams Help>Topics>Browse help>Chat>Basics>Start a chat or via email using the contact list.

We wish you a fruitful exchange and transfer of ideas, knowledge and innovations!

The BEECH POWER team & The WH Coordination office