



EVENT REPORT

Title of Event: Workshop 1 - Presentation of the solar cooperative model to the local community leadership in the local community St. Anton

| | |
|--|--|
| Date & Place of Event: | Tuesday, August 24, 2021 at 10:00; Sv. Anton 1 |
| Partner/s Involved: | PP5 |
| Relation to Project: | <u>meeting with stakeholder</u> / external event with participation / external event organized by a partner |
| Topics tackled and description of links to deliverables/outputs | <p><u>Opening speech Darka Jezeršek Žerjal, Municipality of Koper.</u></p> <ul style="list-style-type: none"> - Presentation of the ENES-CE project and planned project activities: <ul style="list-style-type: none"> Analysis of the situation and starting points for the establishment of a solar energy cooperative, Establishment of a solar energy cooperative, Information and communication. <p><u>Opening speech Rajko Leban, director of Local Energy Agency - GOLEA.</u></p> <p><u>Detailed presentation of project activities:</u></p> <ol style="list-style-type: none"> 1. Analysis of the situation and starting points for the establishment of a solar energy cooperative: <ol style="list-style-type: none"> 1.1. Examining the legal bases of renewable energy sources and cooperatives, 1.2. Analysis and site selection for the installation of a solar power plant, 1.3. Conducting a survey, 1.4. Preparation of the business model of the solar energy cooperative in the Municipality of Koper, 1.5. Elaboration of the conceptual design of the solar energy cooperative in the Municipality of Koper, 1.6. Regulation of legal relations between the municipality and the solar energy cooperative. 2. Establishment of a solar energy cooperative: <ol style="list-style-type: none"> 2.1. Preparation of the act on the establishment of the solar energy cooperative and the basic cooperative rules, |

2.2. Initiative / merger of a small group and establishment of a solar energy cooperative,

2.3. Acquisition of new members (cooperatives).

3. Information and communication:

3.1. Organization and implementation of three workshops with the local and general public,

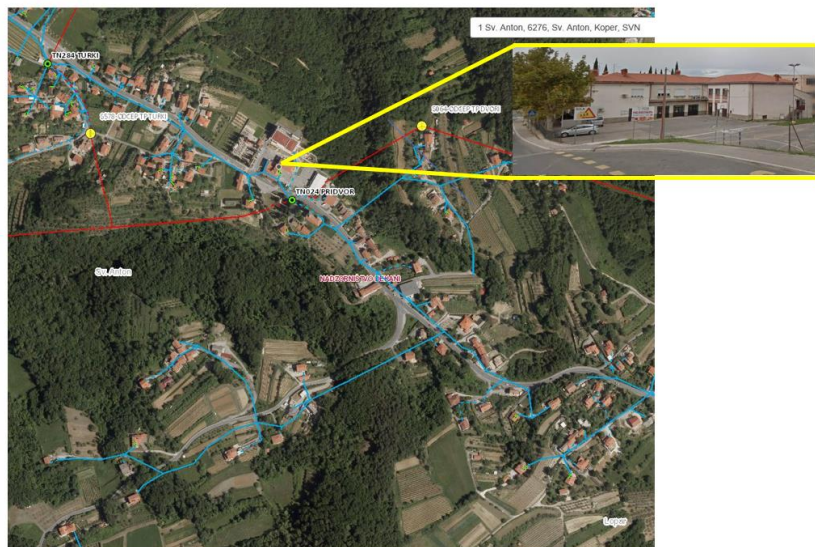
3.2. General promotion of the project,

3.3. Closing event.

Presentation of the legal bases of renewable energy sources and cooperatives (Rajko Leban, GOLEA).

Presentation of good practices in Slovenia (wood cooperative Loški Potok, self-sufficient energy community Luče, solar power plant at a multi-apartment building in Jesenice and community solar power plant at a school in Budanje - Ajdovščina; Rajko Leban, GOLEA).

Presentation selection of location for the installation of a solar power plant (Rajko Leban, GOLEA).



Of the three considered locations, a cooperative home in the local community of St. Anton is selected.

Presentation of the business model of the solar energy cooperative (Tomaž Zver, director of Kisik, d.o.o.):

The members of the cooperative are households, ie. consumers of electricity.

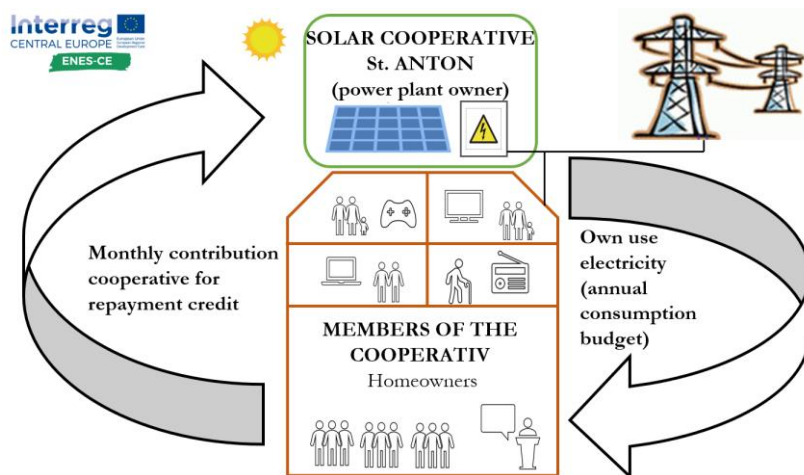
The cooperative invests in solar panels and all the necessary infrastructure (investment estimate = € 90,000):

- 20% (€ 18,000) mandatory shares of cooperatives, each member pays € 1,000
- 18% (€ 16,000) grant

- 62% (€ 56,000) bank loan

For the first 15 years, members will pay 67% of the average amount of the electricity bill. The loan and the rest of the consumed electricity will be repaid from this amount. If a member previously paid € 100 for electricity, he will only pay € 73 after the investment.

The service life of solar panels (manufacturer's guarantee) is 25 years, which means that members of the cooperative for the last 10 years will receive electricity at a particularly affordable price, as they will pay only the management costs per year approx. 2,000 EUR.



Presentation of the basic rules of the cooperative (Tomaž Zver, Kisik):

All members of the cooperative consist of the General Assembly, which usually meets once a year.

The General Assembly appoints the Board of Directors and the President, who run the cooperative.

Any able-bodied natural person or legal entity can become a member of a cooperative.

A member of the cooperative must pay a "mandatory share" set by the General Assembly.





Membership in a cooperative terminates with resignation, expulsion, death of a natural person, termination of a legal entity or termination of a cooperative.

The bodies of the cooperative shall determine the rules for the admission and expulsion of new members.

Expected effects and follow-up, findings/conclusions that will contribute to achieving further project results

Support for the proposed project of the local community leadership St. Anton.
 Implementation of a public presentation of the project to all interested citizens of Sv. Anton community, September 9, 2021.
 Preparation and distribution of materials for citizens.



| | | |
|---|--|---|
| Type of audience reached (project target groups) | Numbers of reached target groups in the framework of event: | |
| | TARGET GROUP | VALUE |
| | LOCAL PUBLIC AUTHORITY | 2 - local community leadership 1 - Municipality of Koper |
| | REGIONAL PUBLIC AUTHORITY | |
| | SECTORAL AGENCY | 1 Local Energy Agency |
| | INFRASTRUCTURE AND PUBLIC SERVICE PROVIDER | |
| | INTEREST GROUPS INCLUDING NGO's | |
| | HIGHER EDUCATION AND RESERACH | |
| | BUSINESS REPORT ORGANISATION | 2 (Kisik, d.o.o., Avelis, d.o.o.) |
| GENERAL PUBLIC | | |
| Annexes (photo, media coverage web-links ect.,...) |   | |
| |  | |
| |  | |