



FramWat Electronic Newsletter 6 2020

Guidelines - Practical Guidelines on Planning Natural and Small Water Retention Measures

The guideline of the project provide a step-by-step (5 step) guide to the application of natural small water retention measures (N(S)WRM) in river basins, and each step makes a reference to the DSS in the pilot catchments.

The publication addresses the knowledge gap and issues related to the integration of N(S)WRMs into the third cycle of river basin management plans according to the Water Framework Directive (WFD). The Guidelines describe the role of green infrastructure in the landscape in solving water management issues such as floods, water quality/quantity, and erosion. Nature-based small water retention measures improve water balance, decrease sediment transport, and improve nutrients cycle.

The target group of the guidelines are decision-makers, experts, and stakeholders involved in the design and implementation of N(S)WRMs as part of plans and programmes addressing crosscutting water management, climate change, biodiversity, forestry, agriculture, and land use issues.

The added value of the Guidelines is that it based on the analytical work of the FramWat project and coordinated testing in real pilot catchments in several countries in Central Europe. The Guidelines connect all-important project outputs, highlights best practices, and summarise results from the pilot catchment in a simple 5-step process of N(S)WRM planning.

The steps comprise of preparation phase (Step 1), valorisation of the catchment (Step 2), potential measures and scenarios for improvement (Step 3), developing the Concept Plan (Step 4), and finally Concept Plan into Action Plan (Step 5). Each step makes a reference to the Decision Support System (DSS) and the pilot catchments.

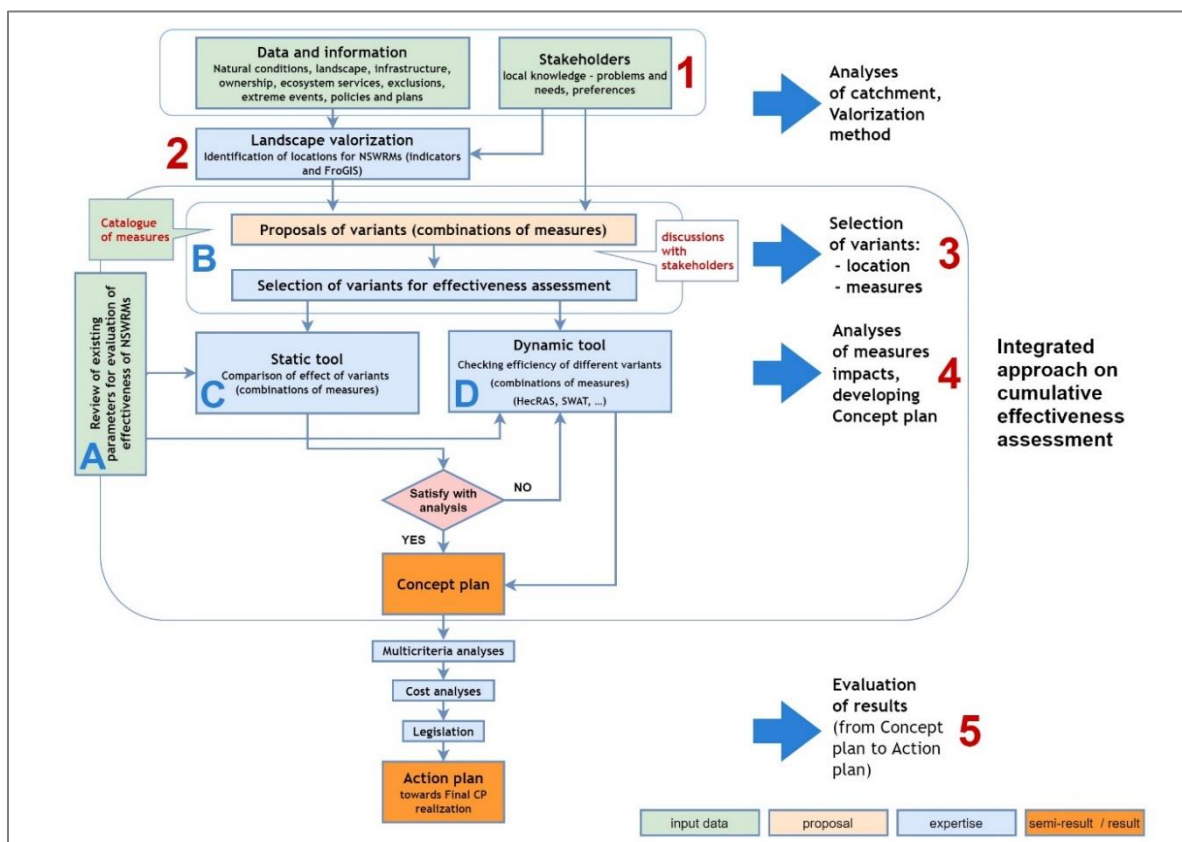


Figure: Scheme of the proposed procedure for N(S)WRM planning in the river basin and the role of Guidelines and Manual in this process (1, 2, 3, 4, 5 – steps in Guidelines; A, B, C, D – phases in Manual)





Manual - on how to assess effectiveness of the system of measures in the river basin

The primary goal of the Manual on how to assess the effectiveness of a system of measures in a river basin is to support the selection of the most hydrologically effective/appropriate natural small water retention measures (NSWRMs) at the local and catchment scale. The manual will help regional and national decision makers/authorities prepare relevant parts of the Program of Measures for their River basin management plans (RBMPs), Flood risk management plans (FRMPs), Wetlands management plans, or other “water-related national plans”, and compile Action plans in the next planning cycles. Moreover, it will facilitate arguments for the consultation processes between different sectors or stakeholders in particular countries (agriculture, forestry, municipal authorities, etc.), aimed at the selection of NSWRMs to be used in strategic documents.

More detailed information about the Guidelines here:

[DT353-Guidelines.pdf \(interreg-central.eu\)](#)

More detailed information about the Manual here:

[DT253-Manual-on-how-to-asses-effectiveness.pdf \(interreg-central.eu\)](#)

