



“Open HoCARE 2.0” transregional public Conference:
“Policy Tool and Home Care measure”
28th October 2020 (2 hours) 10.00-12.00 a.m.

A collaborative approach to implement innovative AHA:

The experience of the RSCN



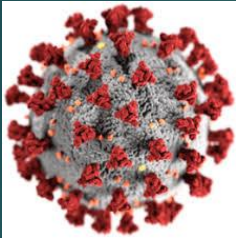
Maddalena Illario
Reference Site Collaborative Network
R&D Unit, AOU Federico II
Department of Public Health, Unina



The current framework

CHALLENGES

2020

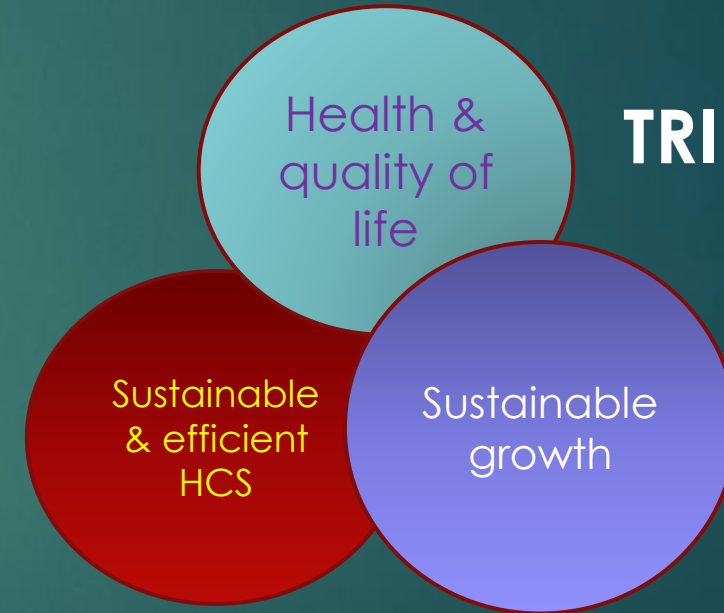


Growing health inequalities

Growing social needs

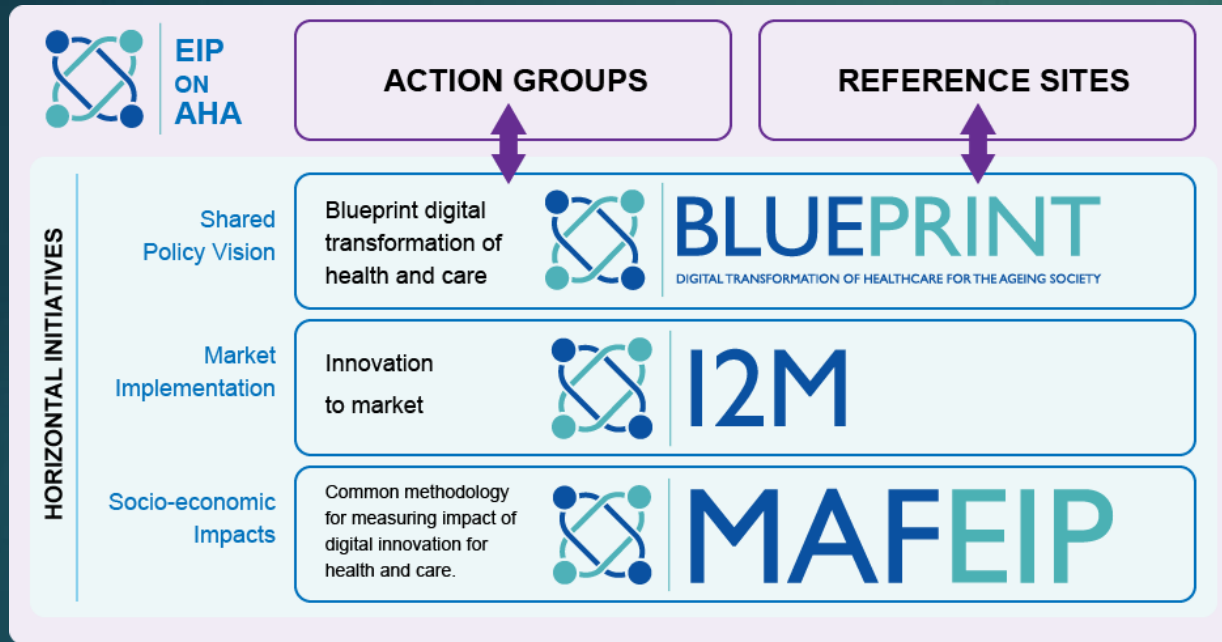
Aligning investments

Increasing cost for complex needs



TRIPLE WIN

THE EIP on AHA



- Scaling-up digital innovation through regional eco-systems
- Encouraging peer-adoption of reference good practices
- Promoting stronger connections across regions and cooperation in the field of active and healthy ageing

Lessons learned: It takes many networks to implement



- Gov/Health/Care
- Academic
- Industry
- Civil Society

ERRIN European Regions Research and Innovation Network

Coral Regional Policies for Active and Healthy Ageing

Mattani SSN

EIT Health InnoStars

EHTEL EUROPEAN HEALTH TELEMATICS ASSOCIATION

CPME

ECHAlliance

COCIR

ACTIVE CITIZENSHIP NETWORK

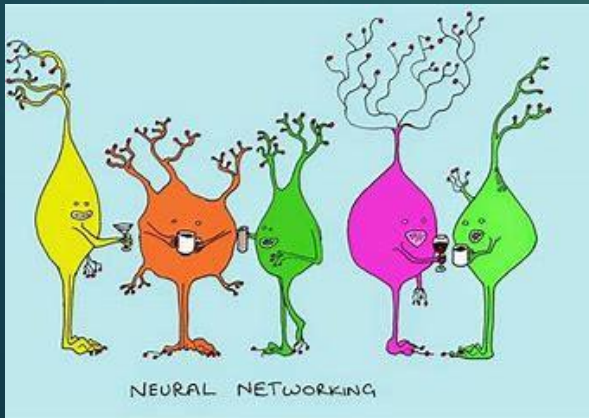
EFN

European Patients Forum

SHAFE

Caritas Diocesana de COIMBRA

IFIC International Foundation for Integrated Care A movement for change



-  Improving prescriptions and adherence to treatment
-  Better management of health: preventing falls
-  Preventing functional decline & frailty
-  Integrated care for chronic conditions
-  ICT solutions for independent living & active ageing
-  Age-friendly cities and environments



RSCN History

- ▶ **Established in 2013 following 1st Call for Reference Sites**
 - ▶ Bottom Up initiative by Reference Sites for Reference Sites
 - ▶ Supported by Commission
 - ▶ 104 Reference Site Members
- ▶ **Became a legal entity (ASBL) under Belgian Law November 2017**
- ▶ Since 2013 RSCN has regularly supported the Commission with experts and keynote speakers
- ▶ **Since 2019**
 - ▶ Growing our network across Europe and beyond e.g. WHO,
 - ▶ Developing closer relationships with Action Groups
 - ▶ Supporting the Commission in delivering its new objectives for AHA and digital transformation of health and care





Mission and vision

MISSION

- ▶ **The RSCN aims to support Reference Sites in Europe, and beyond, to:**
- ▶ Promote all actions of AHA
- ▶ Accelerate the deployment of major innovations which will improve health and care outcomes,
- ▶ Increase the sustainability of health and care systems,
- ▶ Create economic growth and jobs.

VISION

- ▶ To help our members accelerate the development, deployment, and adoption of innovative health and social care solutions,
- ▶ Including proven AHA delivery models and digital solutions,
- ▶ Provide real impact for patients and citizens,
- ▶ Contribute towards sustainability of services.



ProMIS History

ProMIS – Mattone Internazionale Salute Programme is a **network** made up of **Italian Ministry of Health** and **Regions/Autonomous Provinces** and coordinated by the **Veneto Region**

Established in 2010 to **strengthen regional cooperation and links between Italian regional health practices and policies and the European initiatives on health**

Focused on **capacity building and knowledge sharing for all the key health actors in Italy** (e.g. regional authorities, hospitals, etc.) in order to **promote across Italy the dissemination of EU policies and funding opportunities in the framework of health, research and innovation.**





Objectives

- ✓ Strengthening the **internationalisation** of the Italian Healthcare System (national, regional and local levels)
- ✓ Improving the internationalisation **strategies** of health system actors (national, regional & local levels)
- ✓ Supporting and promoting **actions** through a strategic national systematic approach to affecting the European programming
- ✓ Promoting a competitive **participation** in projects funded by European calls
- ✓ Promoting and supporting the "Health in all policies" **approach**



I2M Hackaton
for digital transformation of processes and products in the health sector





Thematic Groups

- Ensure bottom-up approach
- Foster capacity building
- Break down isolation
- Share strategies
- Develop Person centered services



EIP ON AHA

RSCN

Examples and testimonials of positive policy changes

- The Italian ProMIS project evolved into a structured Programme supported by the Italian Ministry of Health
- The MACVIA integrated care pathways for airway diseases
- The Barcelona Brain Health Initiative
- The Campania Strategy for Health Promotion
- EU_SHAFE Interreg on Smart health age friendly environment
- REFLECTION - INTERREG Project Lead by the Lombardy Region
- Lombardy Region is leading standardised processes for integrated multi-specialty care models at community level
- Ho.Care 2.0 Interreg: Innovations for home care services
- The CONSENSO model for community nurses
- The Lyngby programme in Northern Denmark
- Veneto Region MuoverSI programme, The Community-Based Programme on Prevention and Mitigation of Frailty (ICP - PMF) in Community-Dwelling Older adults.
- Being, Emilia Romagna region scale-up of the SUNFRAIL tool to screen community dwelling older adults
- The Tuscany region AFA (Attività Fisica Adattata: adapted physical activity) programme
- The Tuscany risk stratification system
- The Andalusia Public Health Department strategy for AHA
- The Coimbra programme for AHA
- The Styria programme for nutrition and health for active and healthy ageing
- Vitaal Twente RS

Showcases supporting scaling up of digital innovation for active and health ageing: synergies between AGs & RS

Examples of GPs that are being deployed to different extent by the RS of A3 AG:

Good Practices

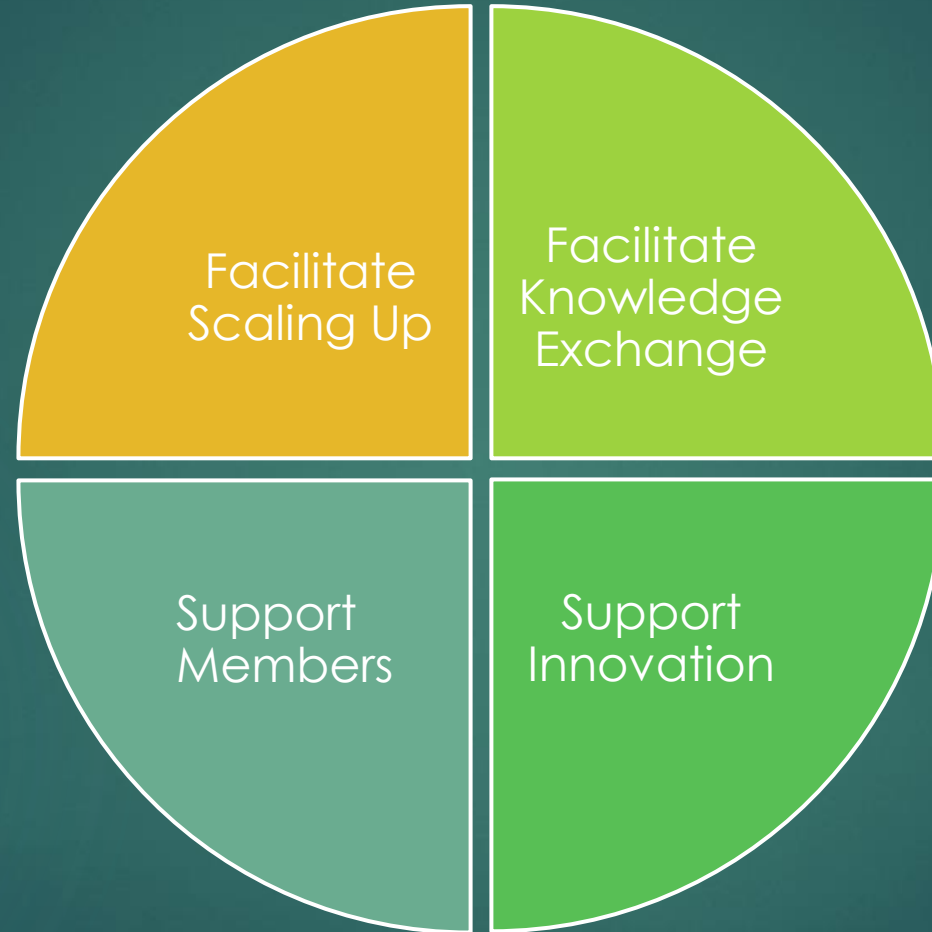
- Graz Malnutrition Screening,
- NDoc- Evidence-based nutrition documentation tool,
- PREDIMED PLUS Study,
- VIVIFRAIL,
- RAPCOG Qmci screening for mild cognitive impairment,
- ANT Caregivers database on quality of life,
- CARESS project,
- ENhANCE project,
- iPrognosis project,
- MARIO robot,
- The 2Long Live the Elderly! Programme,
- FOCUS project Guidelines,
- GrowMeUp project,
- CaMeLi project,
- Guttman NeuroPersonalTrainer®,
- Telerevalidatie,

Coordinators

- Styria Reference Sites
- Graz University Hospital

- Campania Reference Site
- Liguria Region
- Cork University scaled up in Campania, Porto & Catalonia
- ANT Foundation
- Coordinated by Si4Life
- (CNR-ITD) Liguria Region
- Aristotle University of Thessaloniki
- NUI Galway (Ireland)
- University of Rome Tor Vergata
- NTNU (Norway)
- University of Coimbra (Portugal)
- Cáritas Coimbra (Portugal)
- Istitut Guttman (Badalona)
- Twente Reference Site

The opportunities





Thank you



EIP ON AHA

RSCN