

# Putting Regions on Track for Carbon Neutrality by 2050

*The experience in Auvergne-  
Rhône-Alpes region*

Catherine Premat – AURA-EE

Who we are



**EPU**  
N · T · U · A



**EPTA**  
ENVIRONMENTAL ENGINEERS  
CONSULTANTS



**Auvergne Rhône-Alpes**  
Énergie Environnement



**ICLEI**  
Local Governments  
for Sustainability



**FAEN**  
Fundación Asturiana  
de la Energía



**aream**



**Regionalna energetska agencija Sjever**



**EPU**  
N · T · U · A



**WOJEWÓDZTWO WIELKOPOLSKIE**



**LENERG**



**RĪGAS PLĀNOŠANAS REĢIONS**



**ARMEM**



**FEDARENE**



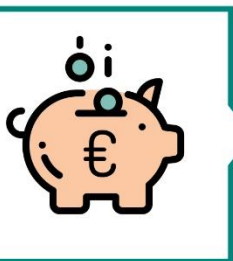
**Energie agentur**  
OBERSTEIERMARK



## Aim:

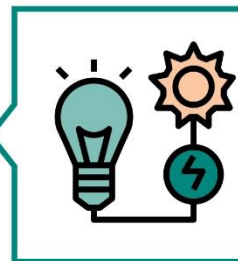
- ✓ Mobilization and guidance of public authorities in defining long-term energy policy priorities,
- ✓ Promotion of multi-level governance and
- ✓ Support of regional and local authorities in developing, financing and implementing ambitious integrated sustainable energy and climate policy action plans in order to achieve climate resilience and carbon neutrality by 2050.

Carbon neutrality refers to a minimum target of 80% CO<sub>2</sub> emission reduction at the domestic level, by promoting mainly the use of Energy Efficiency and RE technologies, allowing for the surplus to be addressed by national policies and the purchase of carbon credits, in line with each national framework.

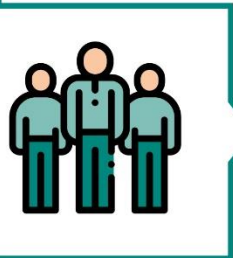


**160**  
mEUR

**5140**  
GWh/y EE

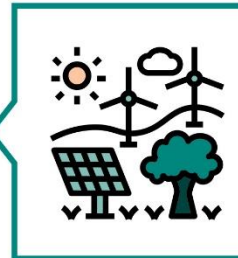


**116**  
policies

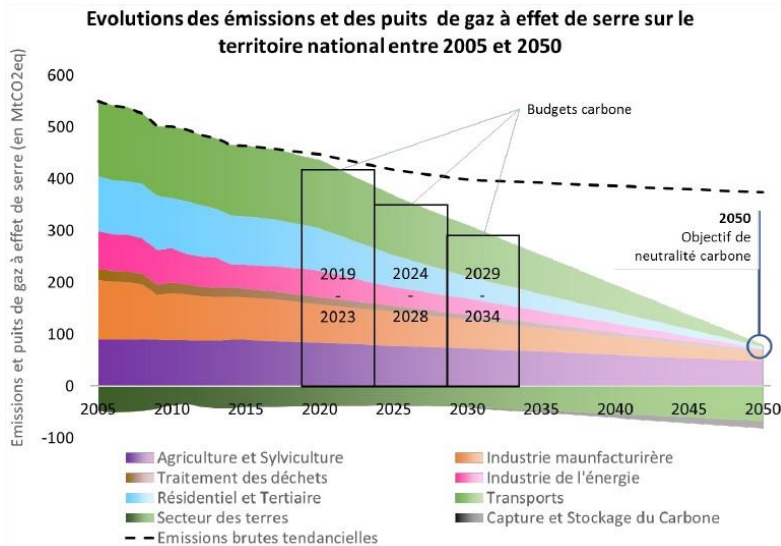


**710**  
people

**153**  
GWh/y RE

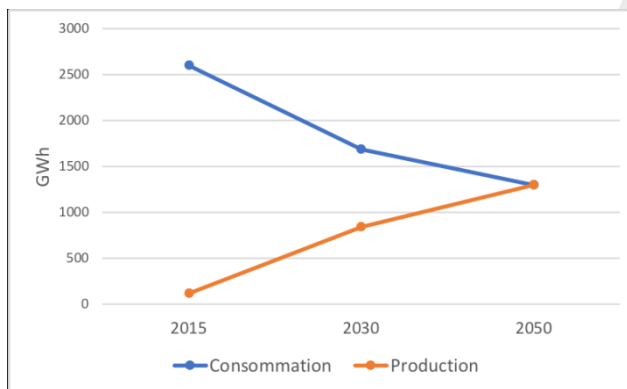


## National low carbon strategy 2 (SNBC – Dec 2018): from factor 4 to carbon neutrality by 2050



## Priorities at regional/local level:

- ❖ Regional scheme for spatial planning, sustainable development and equality between regions (SRADDET) -> *compulsory*
- ❖ Sustainable Energy-Air Quality-Climate action plans (“SEACAP 2030”) -> *compulsory for local authorities more than 20,000 of inhab.*
- ❖ Positive Energy Territories (TEPOS 2050) -> *voluntary approach*





8,000,000 inhab.



Energy consumption: 43%  
GHG emissions: 25%  
Households: 3 millions



Energy consumption: 34%  
GHG emissions: 35%  
In increase since 2005



Energy consumption: 21%  
GHG emissions: 23%



Temperatures: +2°C since 60 years  
Days of frost: -20 in 60 years  
Quantity of snow: -40 cm in 30 years  
Chronic water deficit: 40% of territories





## Région Auvergne-Rhône-Alpes

Couverture des EPCI obligés pour les PCAET

### Légende

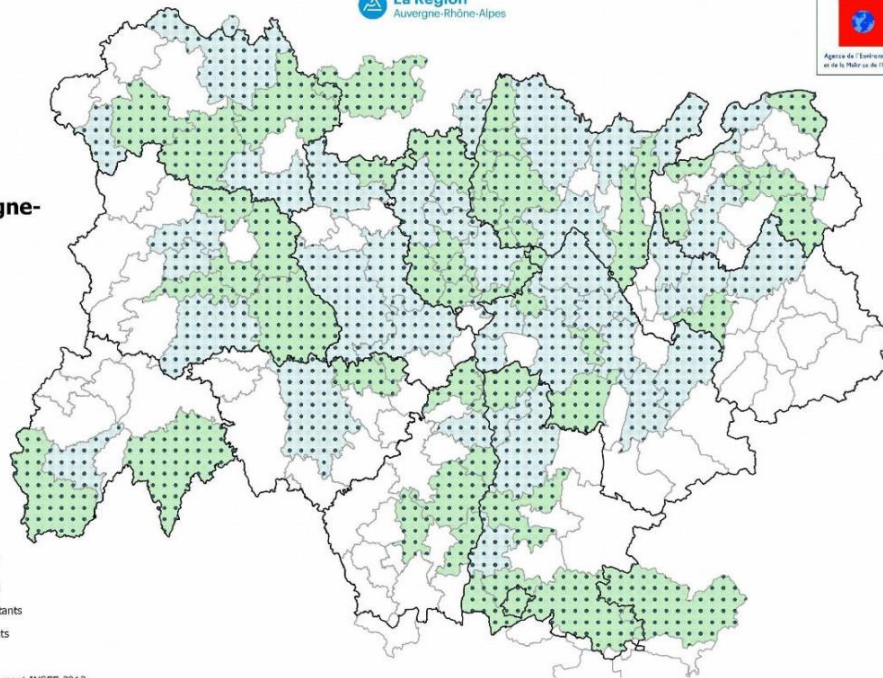
#### Obligation de PCAET

• • • Obligation de PCAET

#### Population des EPCI \*

- plus de 50 000 habitants
- de 20 000 à 50 000 habitants
- moins de 20 000 habitants

\* Population issue du recensement INSEE 2013



© IGN, BDTOP® / DREAL Auvergne-Rhône-Alpes - Service Prévention des Risques Industriels Chimie Air Énergie

Réalisation DREAL CIDDAE - PIRCAE 2017-03-10

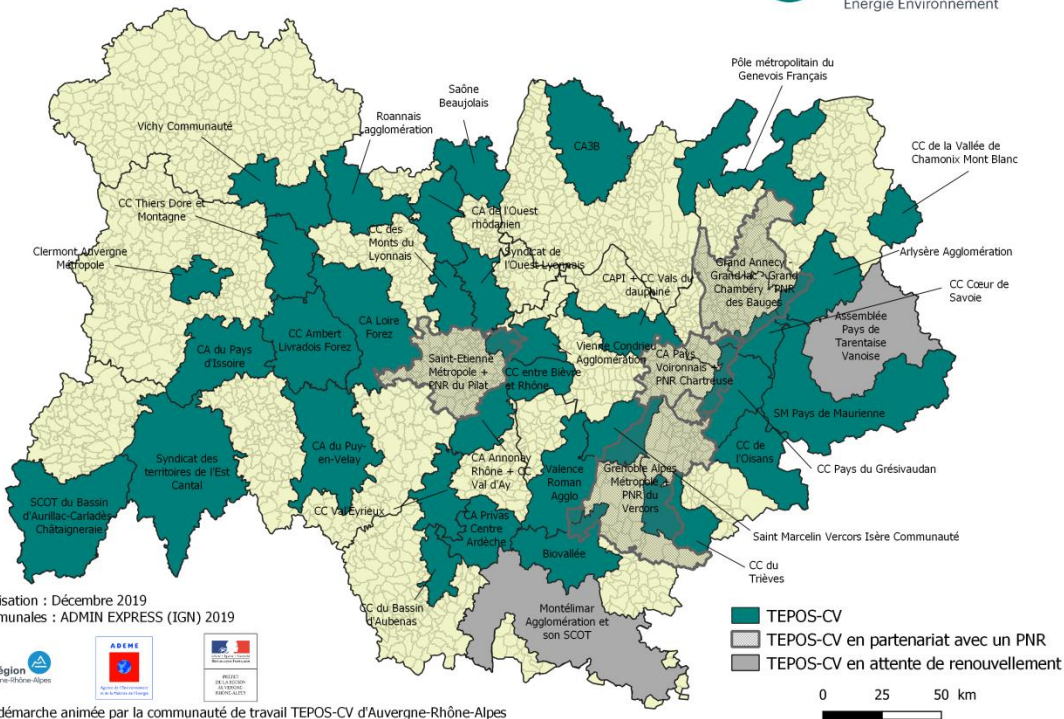




## TEPOS-CV de la région Auvergne-Rhône-Alpes



**Auvergne  
Rhône-Alpes**  
Énergie Environnement



Date de réalisation : Décembre 2019  
 Limites communales : ADMIN EXPRESS (IGN) 2019

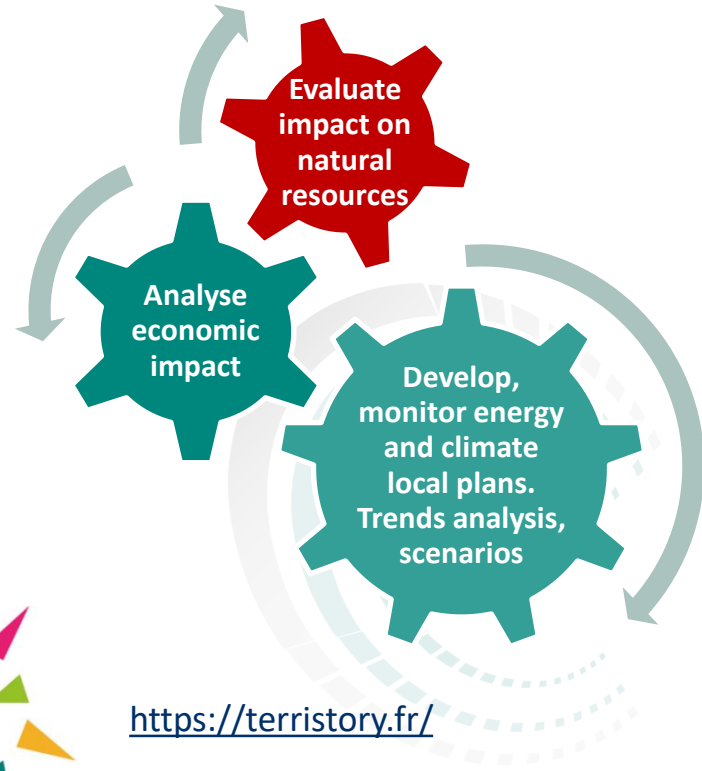


Une démarche animée par la communauté de travail TEPOS-CV d'Auvergne-Rhône-Alpes



Advanced tool for climate and energy planning monitoring:

- ❖ TerriSTORY®: a web based tool for decision making at regional and local level,
  - Integrating energy, climate, resources, economic data
  - Mapping and GIS tool
  - Free – collaborative open source

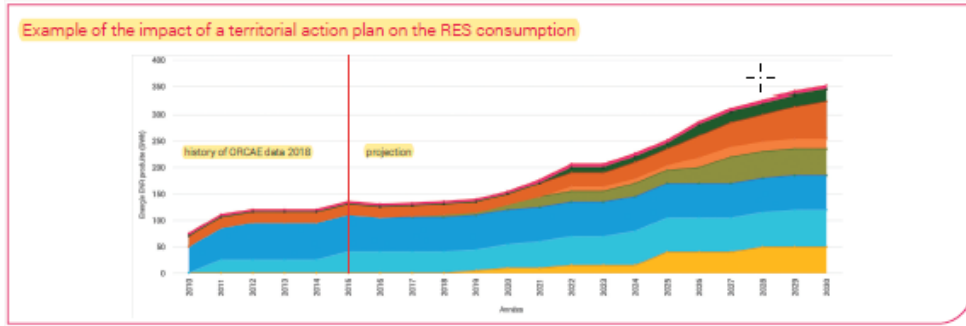
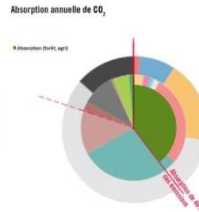
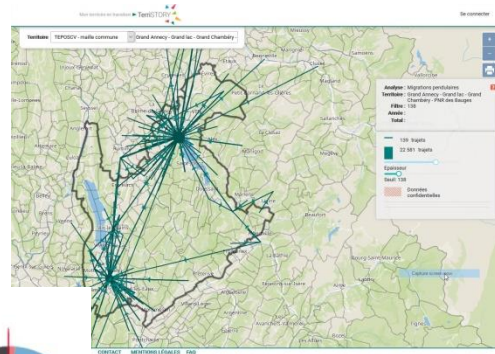


## Understand territorial trends

- ❖ Analyse resource reserves and flows via an interactive interface

## Design a prospective vision of a territory:

- ❖ Analyse the socio-economic and environmental impacts of your Sustainable Energy and Climate Action Plans and follow-up with scenarios
- ❖ Define a trajectory in line with the challenges ahead





**Thank you!**

*Catherine Premat*

*[catherine.premat@auvergnerhonealpes-ee.fr](mailto:catherine.premat@auvergnerhonealpes-ee.fr)*