

# OUTPUT FACT SHEET

## Trainings

Project index number and acronym	CE1410 REIF
Output number and title	O.T3.1 - Regional capacity building workshops
Responsible partner (PP name and number)	PP8 - ITL Foundation PP10 - Emilia-Romagna region
Project website	<a href="http://interreg-central.eu/reif">interreg-central.eu/reif</a>
Delivery date	November 2021

Summary description of the implemented training measure(s), explaining the specific goal(s), target groups and transnational added value

The Regional capacity building workshops realized in the REIF project aimed at enhancing human resources within the institutional context for the planning and coordination of rail freight transport. Participants were trained in 3 workshops on (i) market analysis & assessment of infrastructure and services, (ii) guidelines for future rail freight infrastructure & services and (iii) implementation of the priority action identified in the roadmap. The workshops followed a jointly developed transnational concept.

The workshops were held in these days:

- Regional capacity building workshop 1 - 17<sup>th</sup> March 2021
- Regional capacity building workshop 2 - 14<sup>th</sup> April 2021
- Regional capacity building workshop 3 - 13<sup>th</sup> July 2021

Due to the restrictions related to the current health situation, all the workshops were held online. The participants belong to the ER.I.C.'s cluster, to Emilia-Romagna region transport planning and network infrastructure offices. Even the staff of ITL and RER that have not been involved directly in the REIF activities. Totally the number of the people were attended the three workshops is 68.

In each event, an expert was invited to share his knowledge and opinion relating to the event's topic or other themes linked to the freight and logistic rail transport sector.

In the first RCBW professor Oliviero Baccelli (nation expert and policy advisor) illustrated the scenarios for the international and national freight rail services to 2030 and the role of infrastructures

development planning and the pillars of Italian Recovery and Resilience Plan. In the second RCBW Damiano Frosi shared his competence describing the main characteristics of the merger and acquisition transactions in the logistic and transport sectors and of the development operations in the sectors through the acquisition of start-ups. In the last RCWB professor Francesco Benevolo illustrated an evaluation on the national and regional incentive laws to the freight rail transport of the last 10 years and a new perspective of new incentive laws in the short-midterm.

#### NUTS region(s) where training(s) have been conducted (relevant NUTS level)

ITH5 - Emilia-Romagna region

#### Expected impact and benefits of the trainings for the concerned territories and target groups

Thanks to this training the activities and the results carried out in REIF project have been shared with the participants. As written in the above box, participants can be grouped in two categories:

- staff of key regional stakeholders (members of cluster ER.I.C)
- staff members of PP Emilia-Romagna (PP10) region (mainly from transport planning and infrastructures offices) and ITL Foundation (PP8), including members that have not been involved directly in the REIF activities

The members of ER.I.C. cluster are Ravenna Port Authority and the main terminal operators, railway undertaking and regional freight villages and intermodal platform (Bologna and Parma Freight villages, Dinazzano Po, Terminal Rubiera, Terminal Piacenza Intermodale, Lotras, Sapir SPA, Terminali Italia).

All the participants also could benefit the speeches given by the experts that were invited to share their knowledge and experience in focal themes of the transport and logistic sectors (e.g. new services and infrastructures, merge and acquisition operations and an overview and a new perspective on national and regional incentive laws to promote rail freight transport sector)

#### Sustainability of the training(s) and developed training material(s) and their transferability to other territories and stakeholders

The implemented capacity building workshops followed a joint curriculum which was elaborated on transnational level. The curriculum can be adopted to other regions or be used for a repetition of the workshop series.

Each participant, with its own role, is already involved in the logistic sector. Starting from their own knowledge, participants will be able to capitalize the lessons learned during the workshops and apply them in their working fields and activities (both private or public). Partners involved in the project (RER and ITL) will support the stakeholder involved in this process.

#### References to relevant deliverables and web-links

If applicable, pictures or images to be provided as annex

The output is based on the following deliverables:

- D.T3.1.1 Joint curriculum (<https://www.interreg-central.eu/Content.Node/REIF/Joint-Curriculum.zip>)
- D.T3.1.2 Regional capacity workshop #1 documentation
- D.T3.1.3 Regional capacity workshop #2 documentation
- D.T3.1.4 Regional capacity workshop #3 documentation

Download link: <https://www.interreg-central.eu/Content.Node/REIF/Regional-Capacity-Building-Workshops-RER.zip>

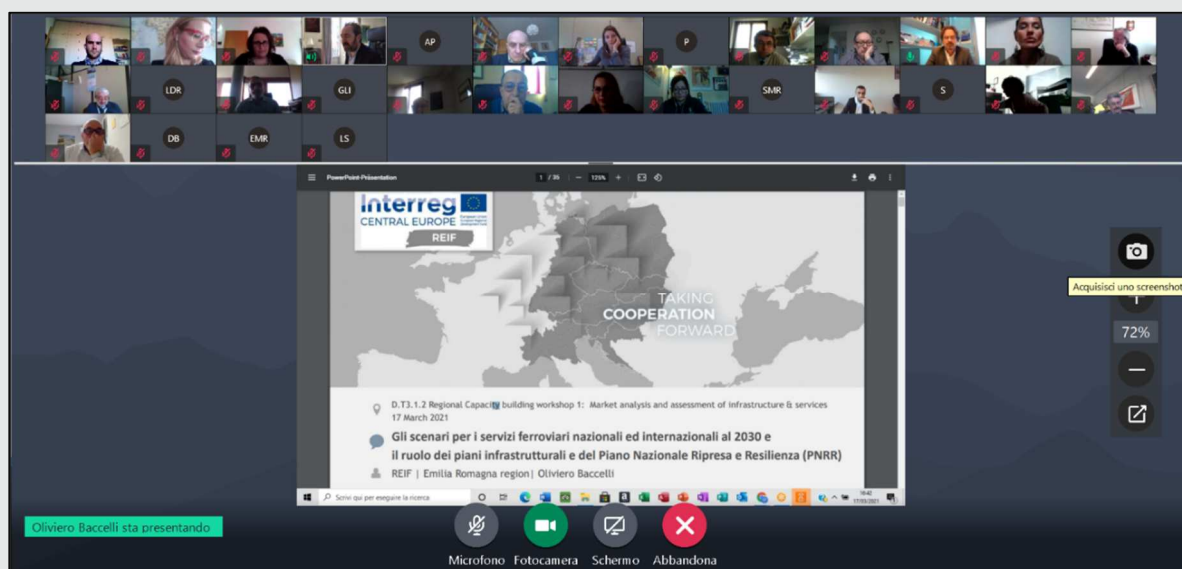


Figure 1 - Screenshot#1 of RCWB1

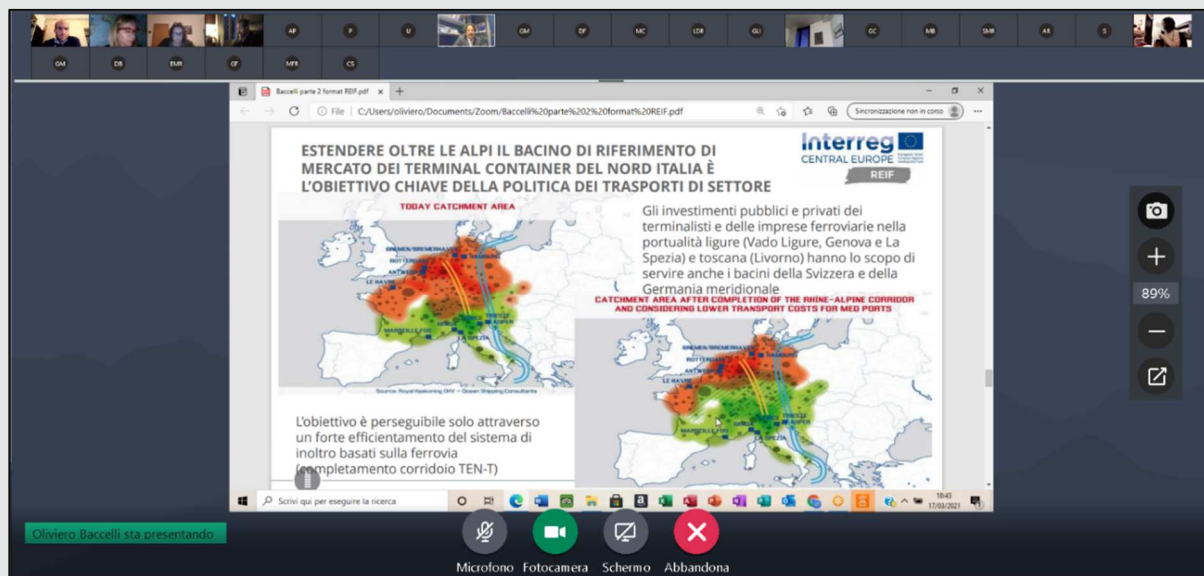


Figure 2 - Screenshot#2 of RCWB1

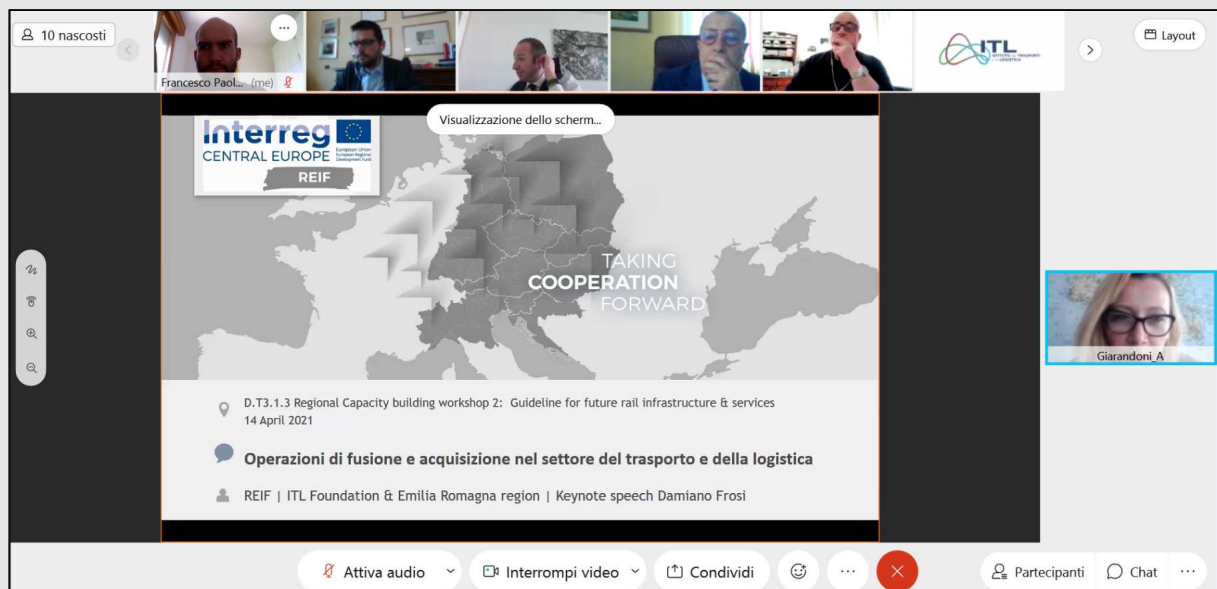


Figure 3 - Screenshot#1 of RCWB2

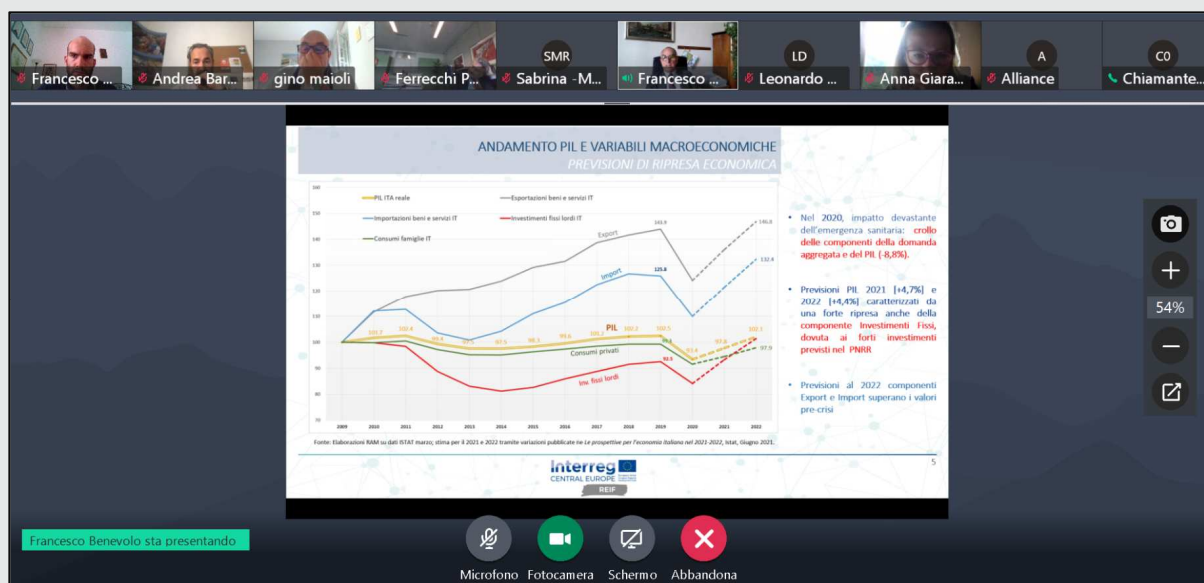


Figure 4 - Screenshot#1 of RCWB3